



# Town of Cochrane

## Roads, Storm Water and Fleet Section 2020 Overview

# **Roads, Storm Water and Fleet Section: Staff Members**

- 1 - Roads Manager**
- 2 - Coordinators ( Roads and Fleet)**
- 1 - Mechanic**
- 9 - FT Operators**
- 3 - PT Winters seasonal positions**
- 4 - PT Summer seasonal positions**

## **Staff Tenure:**

- 0-5 years - 3**
- 6-10 years - 4**
- 11- 15 years - 2**
- 16- 25 years - 4**

# Service Outputs

Services	Service Outputs
Traffic Management operations and signalization	<ul style="list-style-type: none"> <li>• Traffic Signals and Pedestrian Corridors</li> <li>• Traffic signal timing plans</li> <li>• Traffic signal inspections</li> <li>• Traffic and Pedestrian Counts</li> <li>• Traffic control device installations and inspections</li> <li>• Road markings – long line biannually and crosswalks, stop bars and arrows annually</li> <li>• Long line , Crosswalks &amp; Stop bars , Street Signage</li> </ul>
Development Services	<ul style="list-style-type: none"> <li>• Review proposed development submissions and make recommendations to ensure compatibility and operational efficiency.</li> <li>• CCC &amp; FAC inspections – Roads, Sidewalks and Storm water facilities</li> </ul>
Asphalt Roads	<ul style="list-style-type: none"> <li>• Repair and maintenance</li> <li>• Infrastructure upgrades – overlays</li> <li>• Crack sealing</li> <li>• Hot and cold mix patching</li> <li>• Street Sweeping</li> <li>• Inspections</li> </ul>
Gravel Roads	<ul style="list-style-type: none"> <li>• Repair &amp; maintenance</li> <li>• Dust control / calcium chloride application</li> </ul>
Sidewalks	<ul style="list-style-type: none"> <li>• Repair &amp; maintenance</li> <li>• Inspections</li> </ul>
Parking Lots	<ul style="list-style-type: none"> <li>• Repair &amp; maintenance of parking lots</li> </ul>
Snow and Ice Control	<ul style="list-style-type: none"> <li>• Snow removal / Equipment operation</li> <li>• Salt / Sand applications</li> <li>• Salt Management</li> </ul>
Project Management	<ul style="list-style-type: none"> <li>• Tender documents for Operating and Capital projects</li> <li>• Health and safety program</li> </ul>
Information/Inquiries	<ul style="list-style-type: none"> <li>• Verbal/written reports</li> <li>• 2017 (337) 2018 (409) 2019 (426) 2020 ( 533) = 1,332.5 hours of Management and Staff time</li> </ul>
Storm Sewer Collection Services	<ul style="list-style-type: none"> <li>• Provision of reliable storm sewer drainage system to residential and commercial customers</li> <li>• Collection and distribution into the Big Hill Creek, Jumping Pound Creek and Bow River.</li> <li>• Meet Alberta Environmental Protection Enhancement Act requirements - license to operate</li> <li>• Capital Works program planning, design &amp; construction (rehabilitation)</li> <li>• Underground Infrastructure , storm mains, catch basins, OGS units, storm ponds</li> </ul>

# Road Maintenance

Did you know the Roads department maintains

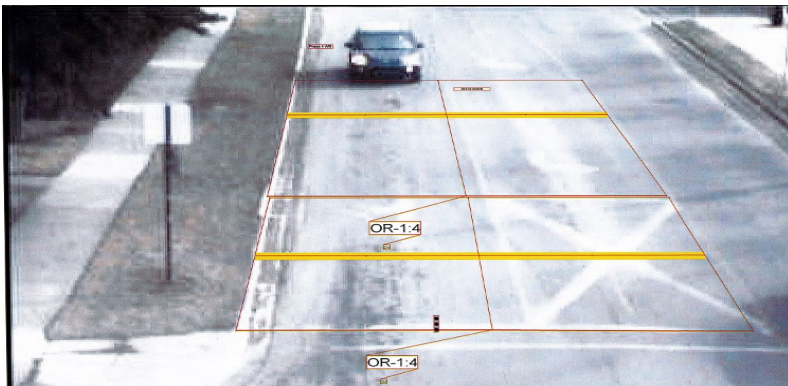
-185 km of paved roads

-98 km of sidewalk

-9 Traffic signals

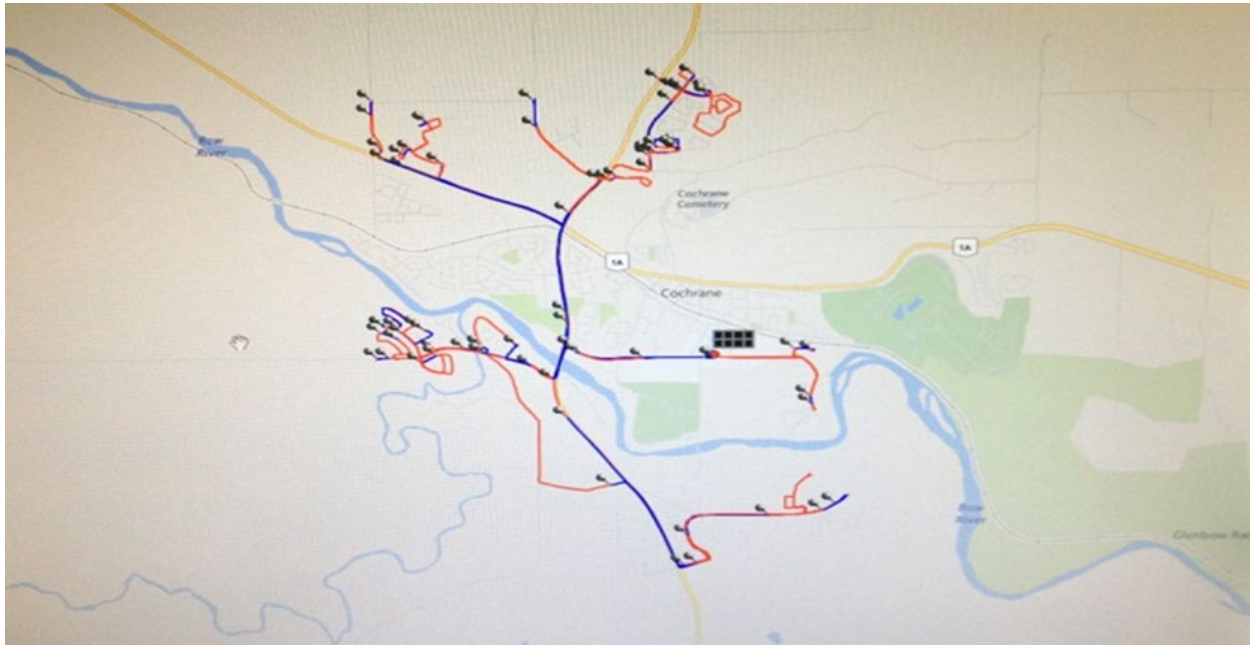
-12 LED crosswalks

Roads markings and message painting



# Snow and Ice Control

**3 tandem axle sanding/plow trucks, 1 Grader,  
1 Loader, 1- 1 ton front mount plow truck  
200.64 Lane Kilometers maintained  
Tracking snow route and material used GPS**





# Street Sweeping



- **1 Street sweeper**
- **Spring sweep contractor assist**
- **We sweep up approx. 1400 tonnes of material a year or 100 tandem truck loads.**
- **4 weeks to complete the spring sweeping program**

# Roads 2020 capital projects



- **New Jack Tennant Memorial Bridge and James Walker Trail**
- **Railway Street upgrades**
- **Centre Ave lane changes**
- **Stormwater rate review**
- **Stormwater Master plan**
- **Surface improvements to various roadways**

# Storm System

**110 km storm lines**

**57 outfalls**

**7 storm ponds / 8 more to be FAC'd**

**12 Oil and Grit separators**

**All of which require regular inspections and maintenance.**

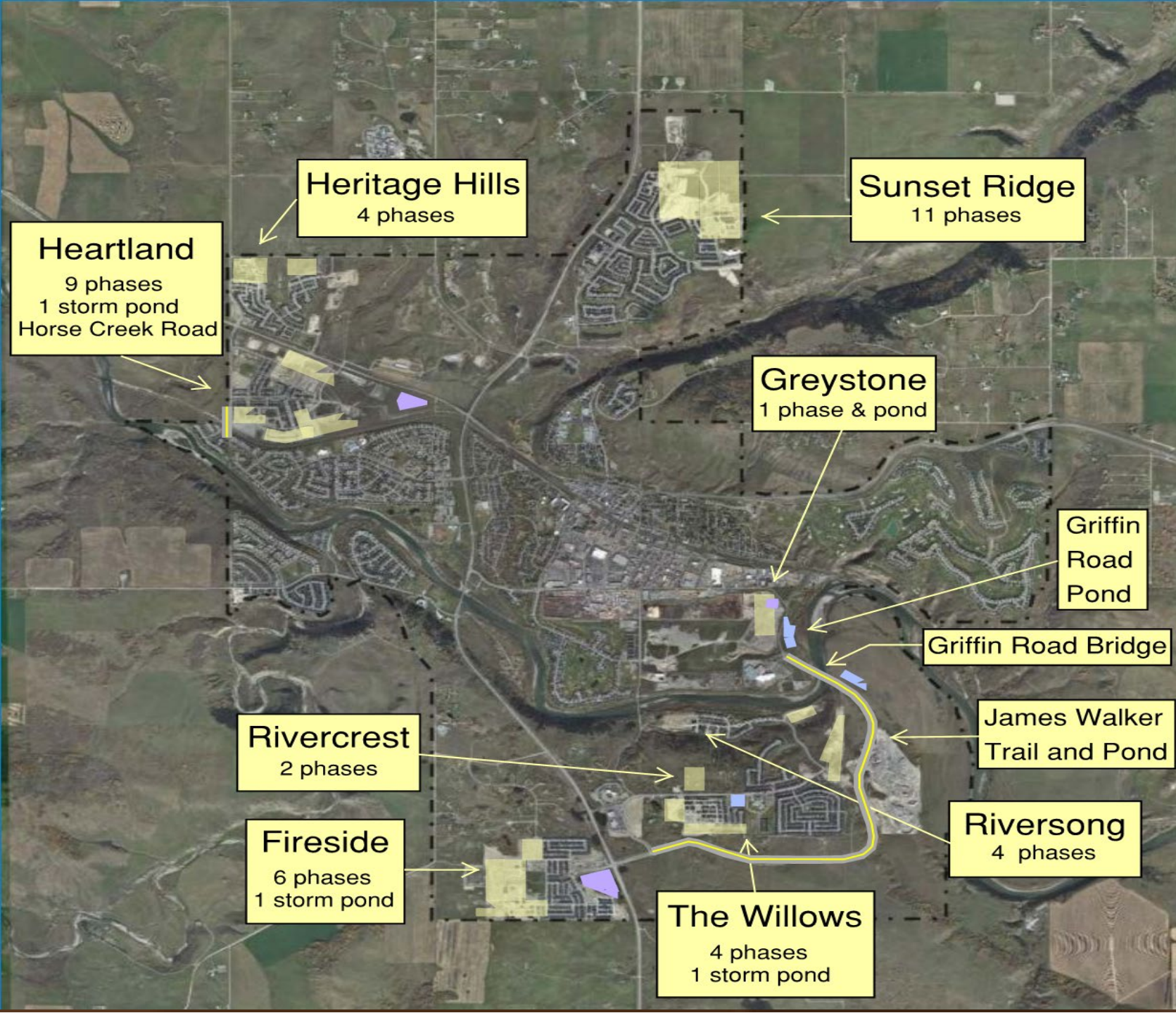




# Expected 41 New Phases of Development 2020-2023

New Infrastructure			
Fac Year	Roads (km)	Storm (km)	Ponds
2020	3.16	4.24	0
2021	8.65	9.14	2
2022	7.70	4.22	1
2023	4.22	1.24	1
Total	23.72	18.84	4

\*Data obtained from CLD master CCC/FAC tracking sheet



**Heritage Hills**  
4 phases

**Sunset Ridge**  
11 phases

**Heartland**  
9 phases  
1 storm pond  
Horse Creek Road

**Greystone**  
1 phase & pond

**Griffin Road Pond**

**Griffin Road Bridge**

**James Walker Trail and Pond**

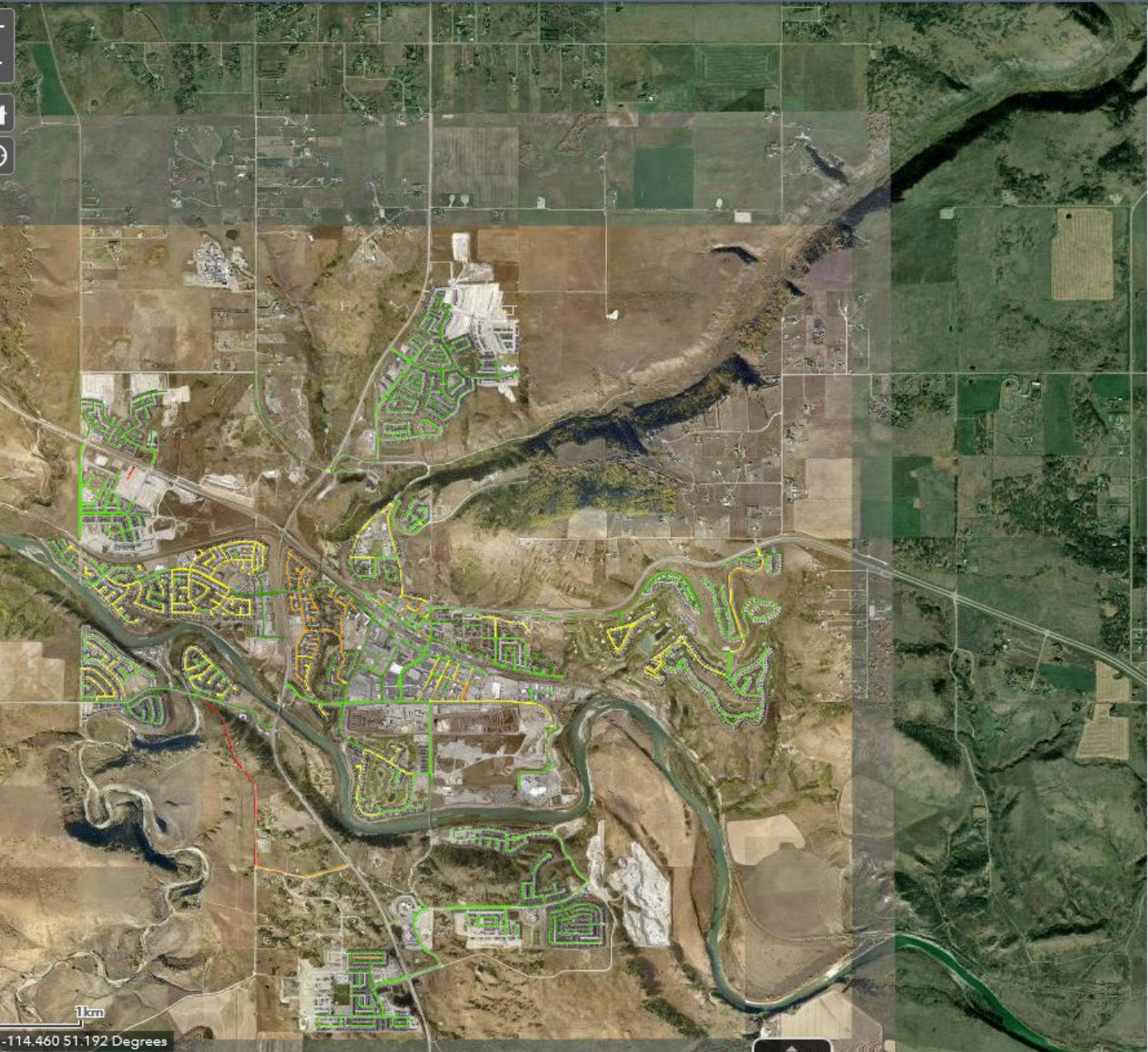
**Rivercrest**  
2 phases

**Fireside**  
6 phases  
1 storm pond

**Riversong**  
4 phases

**The Willows**  
4 phases  
1 storm pond





### Legend

#### Roads\_Inspections

- 1 - Excellent. Essentially in brand new condition.
- 2 - Good. Road is in good condition, comfortably driveable.
- 3 - Fair. Road that is in need of surface repairs and has frequent deficiencies.
- 4 - Poor. Road that requires replacement and should be slated for future capital projects.
- 5 - Failed. Road that is deteriorated to the point that repair is not an option and is difficult to drive comfortably.
- No Rating



# Fleet Management





# FLEET SERVICES

Fleet services consists of one Fleet Coordinator and one Heavy Equipment Technician (H.E.T). Responsibilities follow:

## **FLEET COORDINATOR**

- Daily supervision of staff HET and workflow
- Fleet capital budget planning & implementation
- Fleet asset purchasing & disposal
- Fleet safety
- Commercial vehicle legislation compliance
- Driver monitoring
- Managing fleet inspection, maintenance & repair appointments through private vendors
- Fleet insurance, registration & license plating

## **HEAVY EQUIPMENT TECHNICIAN (HET)**

- Performs mechanical inspections, diagnoses, maintenance & repairs on a very diverse and typical municipal fleet of vehicles, equipment & trailers.
- Performs all parts research, ordering & delivery on all work undertaken internally
- Prepares documentation for all work

# FLEET SERVICES – Cont.

- The municipal fleet is owned and operated by 10 different internal business units. They are:
- Corporate Properties
- Development Services
- FCSS
- Fire Services
- Infrastructure & Operational Services
- Municipal Enforcement
- Parks & Open Spaces
- Roads
- Waste & Recycling
- Water/Wastewater
- The Town of Cochrane owns a very typical municipal fleet and consists of approximately 185 fleet assets that are extremely diverse and varied to provide necessary services to our rate payers. While the fleet makeup varies slightly from year to year as operational needs change some examples are:
  - Automotive vehicles (sedans, SUV's, vans & pickups ¼ ton – 1 ton, etc)
  - Commercial trucks (gravel/snowplow truck, vac truck, bucket truck, picker crane truck, etc)
  - Emergency vehicles (fire trucks and boats, Municipal Enforcement patrol vehicles, etc)
  - Mobile Equipment (Loader, grader, skid steer, forklift, tractors, mowers, etc)
  - Trailers (flat deck, covered utility, water pump, command centre, air compressor, etc)
  - Attachments (buckets, forks, sanders, aerators, stump grinders, etc)

# THE END

## Questions ?

