

2015 DRAFT BUDGET

OCTOBER 27, 2014



Agenda

- Draft Budget Highlights
- Our Workforce
- Ten Year Financial Strategy
- Community Consultation

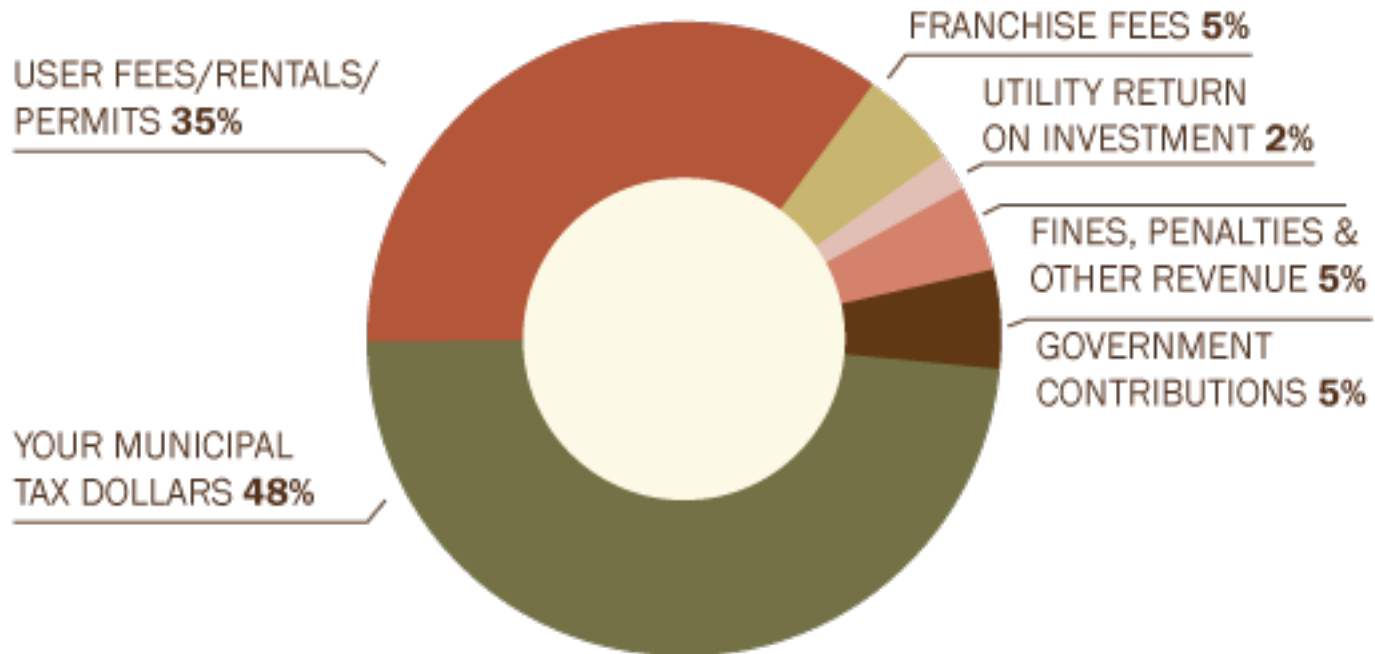


Draft Budget Highlights



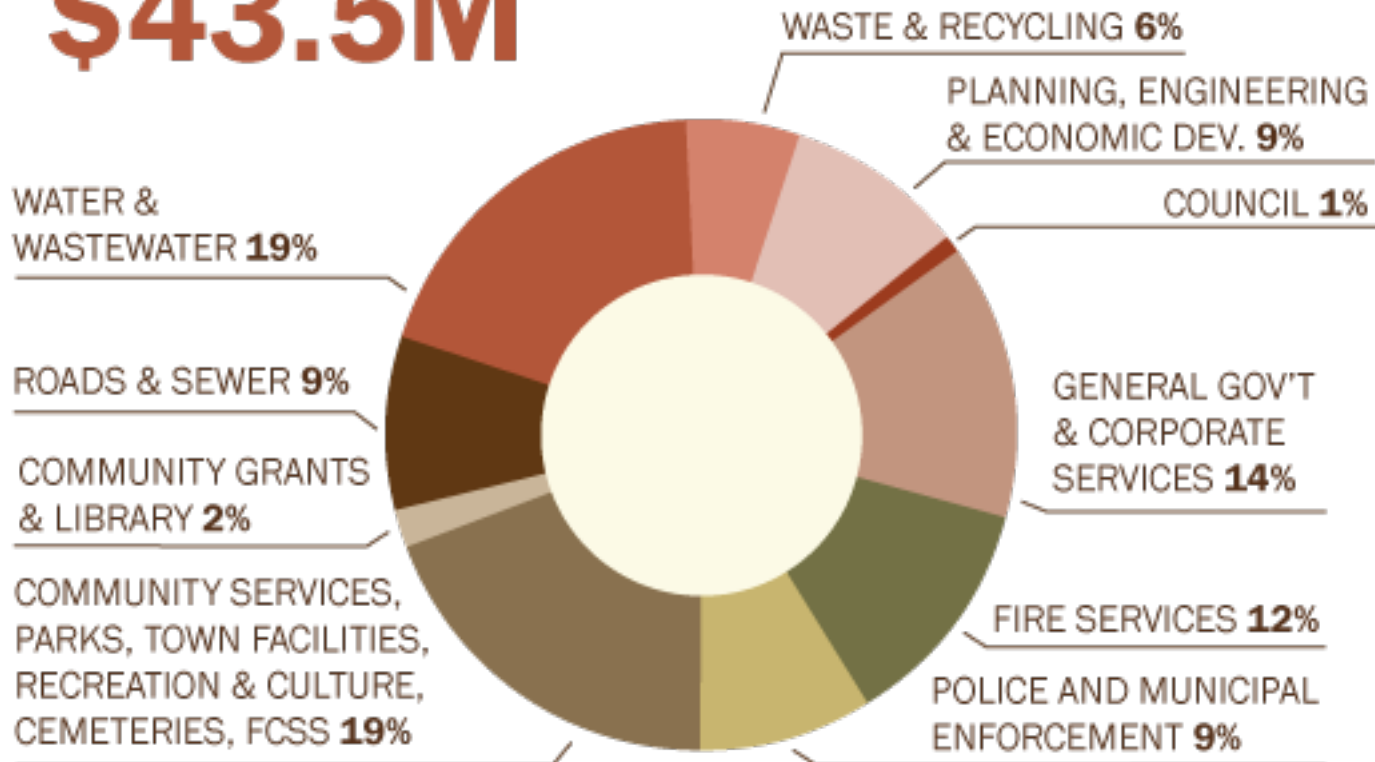
Draft Budget Highlights

REVENUES
\$43.5M

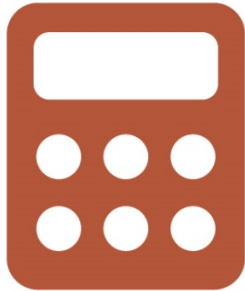


Draft Budget Highlights

EXPENDITURES
\$43.5M



Draft Budget Highlights



2.9%

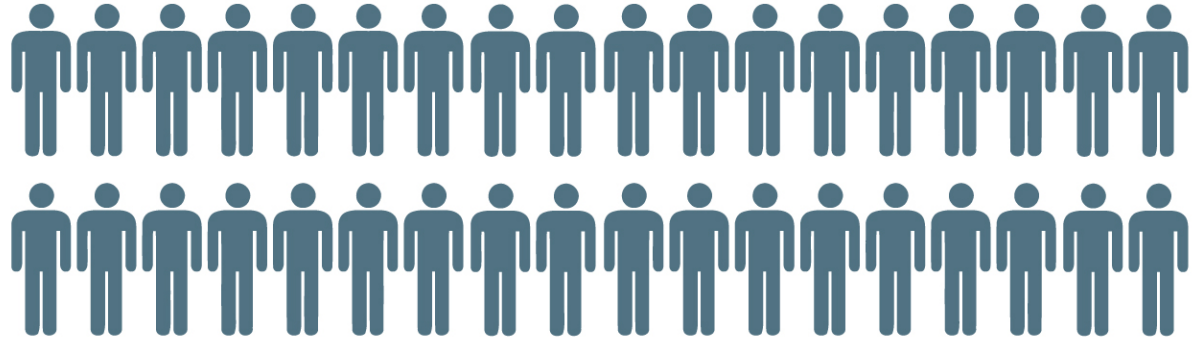
PROPOSED MUNICIPAL
TAX INCREASE

RESIDENTIAL AVERAGE ANNUAL COST (BASED ON ASSESSED VALUE OF \$430,473)	2014	2015
TOTAL MUNICIPAL TAXES	\$2,002	\$2,060



Workforce

OUR WORKFORCE
CONSISTS OF
302
EMPLOYEES EMPLOYED IN



- 242 perm. full-time, part-time & casual positions
- 60 non-permanent positions

Workforce

195.17
FTE FOR 2015

+6.45
FTEs FROM 2014

FTE = Full Time Equivalent
Is a unit of measure which is equal
to the full-time hours for one position



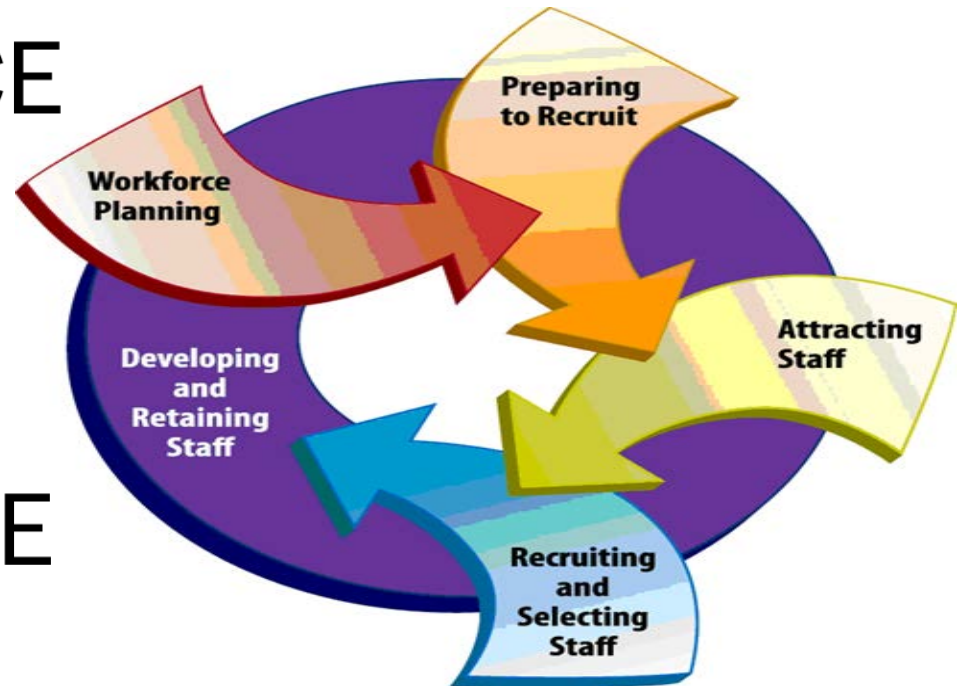
Workforce

\$17.6M

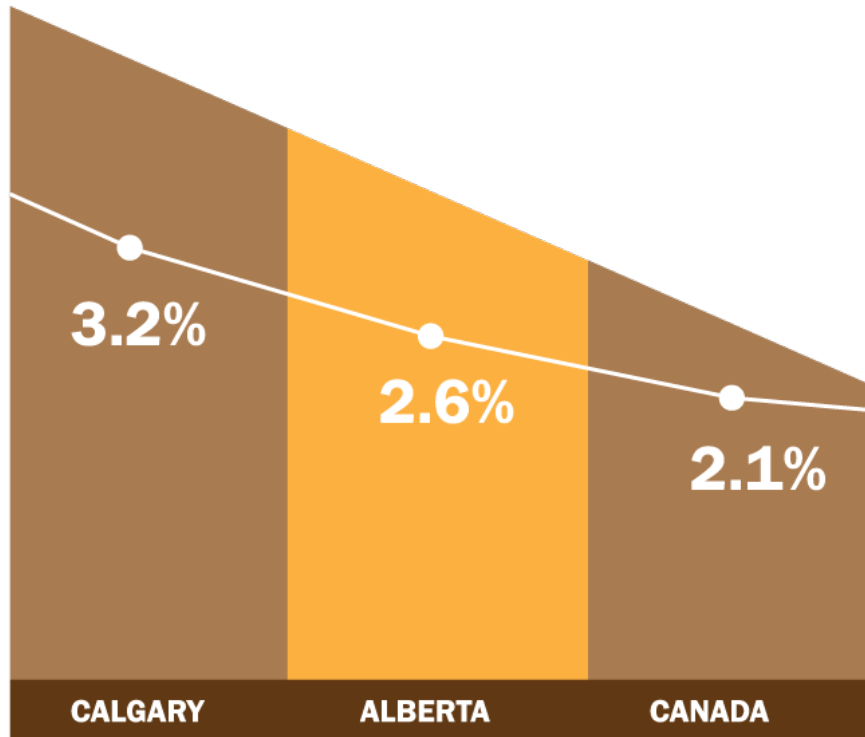
**2015 WORKFORCE
BUDGET**

\$16.8M

**2014 WORKFORCE
BUDGET**



Workforce



3.2%

COLA=COST OF LIVING ADJUSTMENT (OUT OF SCOPE POSITIONS)

**AUGUST 2014
CONSUMER PRICE INDEX (CPI)**

TIMELINE

2014

2015

2016

2017

2018

2019

2020

2021

2022

2023

CAPITAL PROJECTS

\$45M
NEW AQUATIC AND
CURLING/MULTI-SPORT
CENTRE



\$40.2M
BOW RIVER BRIDGE
AND ARTERIAL ROAD
CONNECTIONS



\$10.8M
POLICE STATION



\$2.8M
RIVERFRONT PARK
AND COMPLETE
EAST END PATHWAY



\$1.1M
OPEN SPACE MASTER
PLAN IMPLEMENTATION



\$28.5M
WASTEWATER
CAPACITY UPGRADE



\$2.6M
TRANSIT



\$1.9M
ATHLETIC PARK
DEVELOPMENT



\$4M
RAILWAY PEDESTRIAN
CROSSING JOINING
HISTORIC DOWNTOWN
TO CENTRE AVENUE
COMMERCIAL AREA



\$1.9M
HORSE CREEK
CROSSING PROJECT



\$30.3M
CENTRE AVENUE GRADE-
SEPARATED CROSSING



ONGOING CAPITAL PROJECTS



\$34.3M
ONGOING ROAD AND
INFRASTRUCTURE
PROJECTS

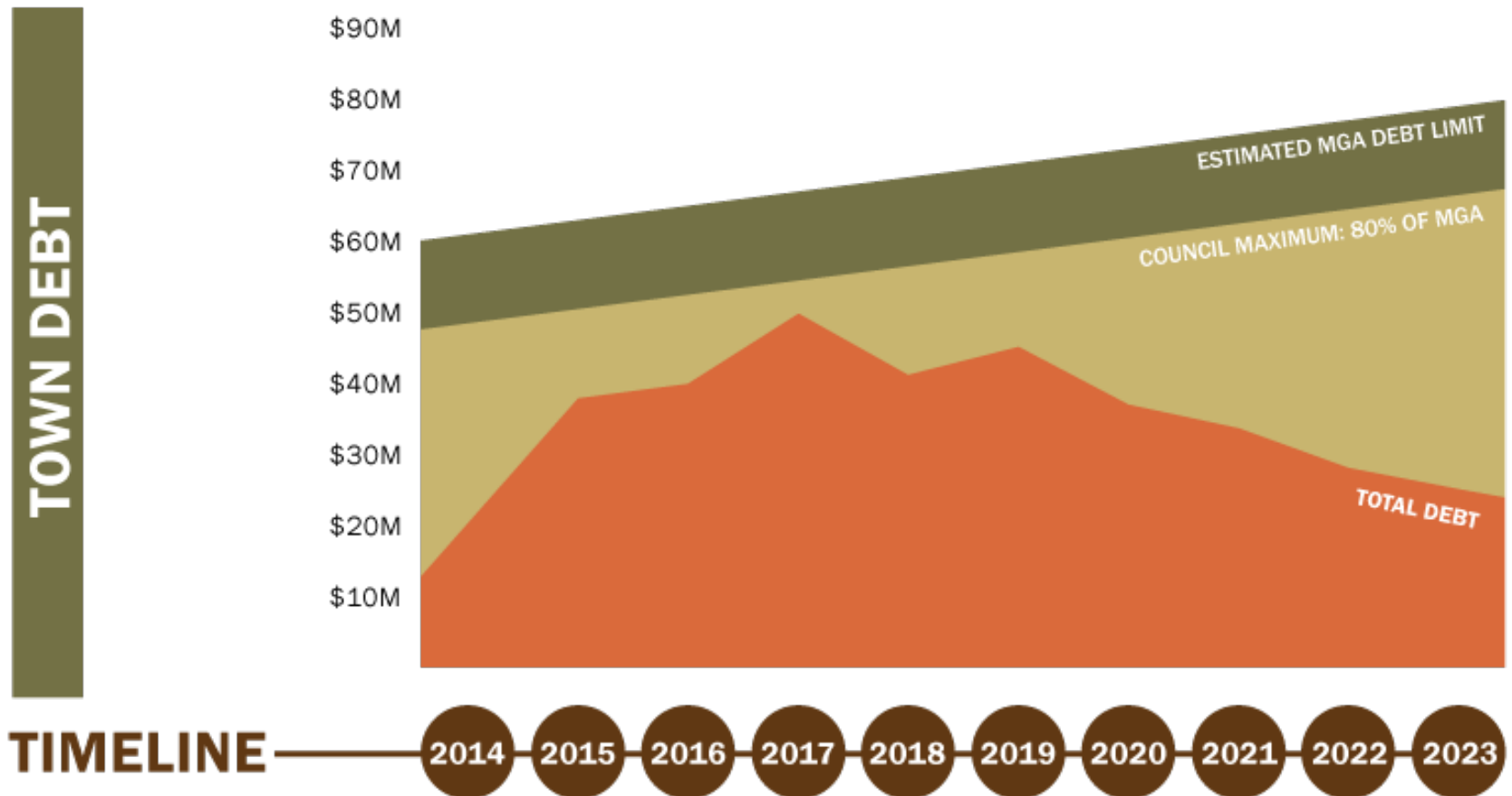


\$10M
ONGOING WATER
CAPACITY UPGRADES

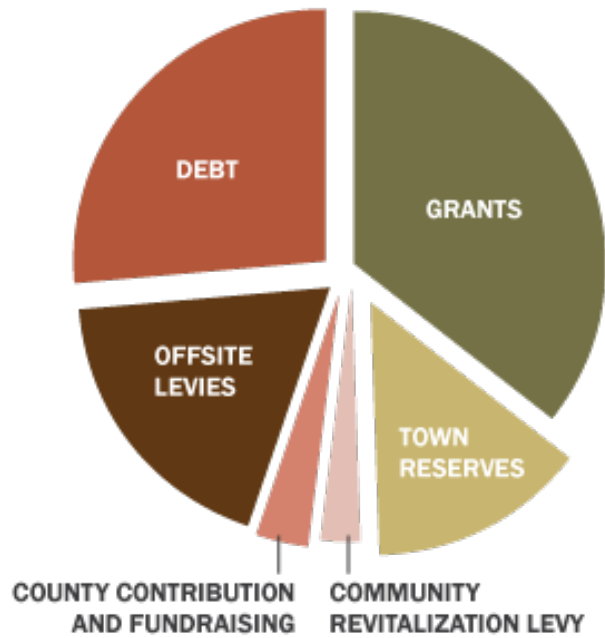
\$14.6M
FLEET, EQUIPMENT AND
FACILITY LIFECYCLING



Ten Year Financial Strategy



FINANCING



3%
INTEREST RATE
FOR BORROWING

3%
PER YEAR INCREASE
INCLUDED IN COST FOR
MULTI-YEAR PROJECTS

\$6M
2018 BUILDING
CANADA GRANT FOR
BOW RIVER BRIDGE



Community Consultation

