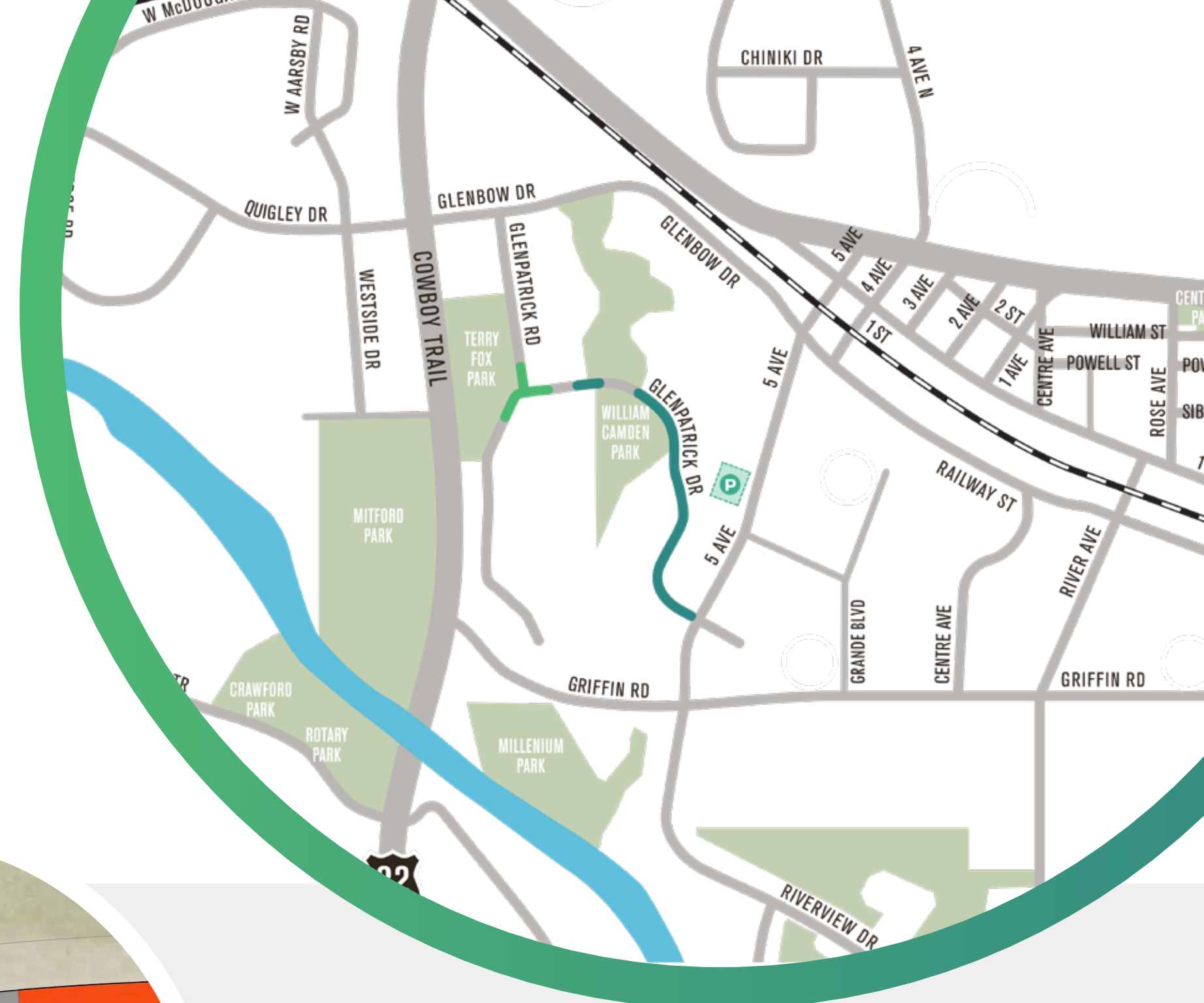


Glenpatrick Drive Infrastructure Replacement



WHY ARE WE DOING THIS?

- Replacement of Aging Infrastructure
- Improve Pedestrian Safety

CONSTRUCTION SCOPE:

- Road and Underground Utility Replacement
- Sidewalk (widening and replacement)
- Enhance Pedestrian Crossings – Concrete Bump-outs

TIMELINE:

Spring / Summer 2023 → Fall 2023

RESIDENTIAL IMPACTS:

- | | |
|--------------------------|----------------------|
| — Road Detours | — Landscaping |
| — Parking | — Mailbox Relocation |
| — Sidewalk Closures | — Garbage Services |
| — Driveway Accessibility | |



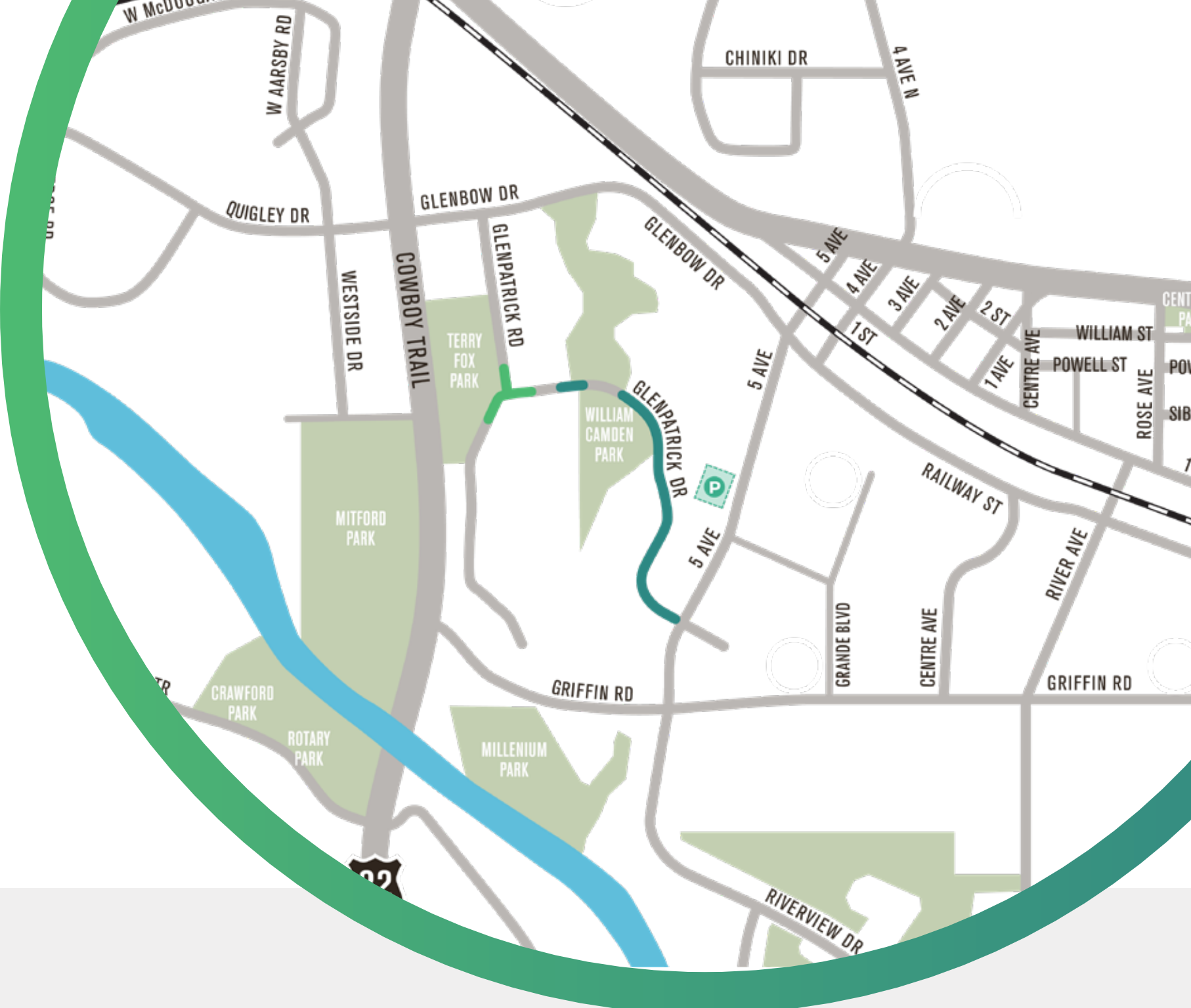
— Optional Sidewalk Replacement / Additions
— Optional Road Surface Replacements



Please use this QR Code to access additional information and stay up-to-date on these projects.



Mini-Roundabout (Traffic Button)



WHY ARE WE DOING THIS?

- Improve Traffic Movement
- Pedestrian Crossing Safety Improvements

SCOPE OF CONSTRUCTION:

- Intersection Improvement
- Enhance Pedestrian Crossings – Concrete Bump-outs

TIMELINE:

July / August 2023 → Fall 2023
(Construction while schools are closed)

RESIDENTIAL IMPACTS:

- Road Detours
- Parking
- Sidewalk Closures



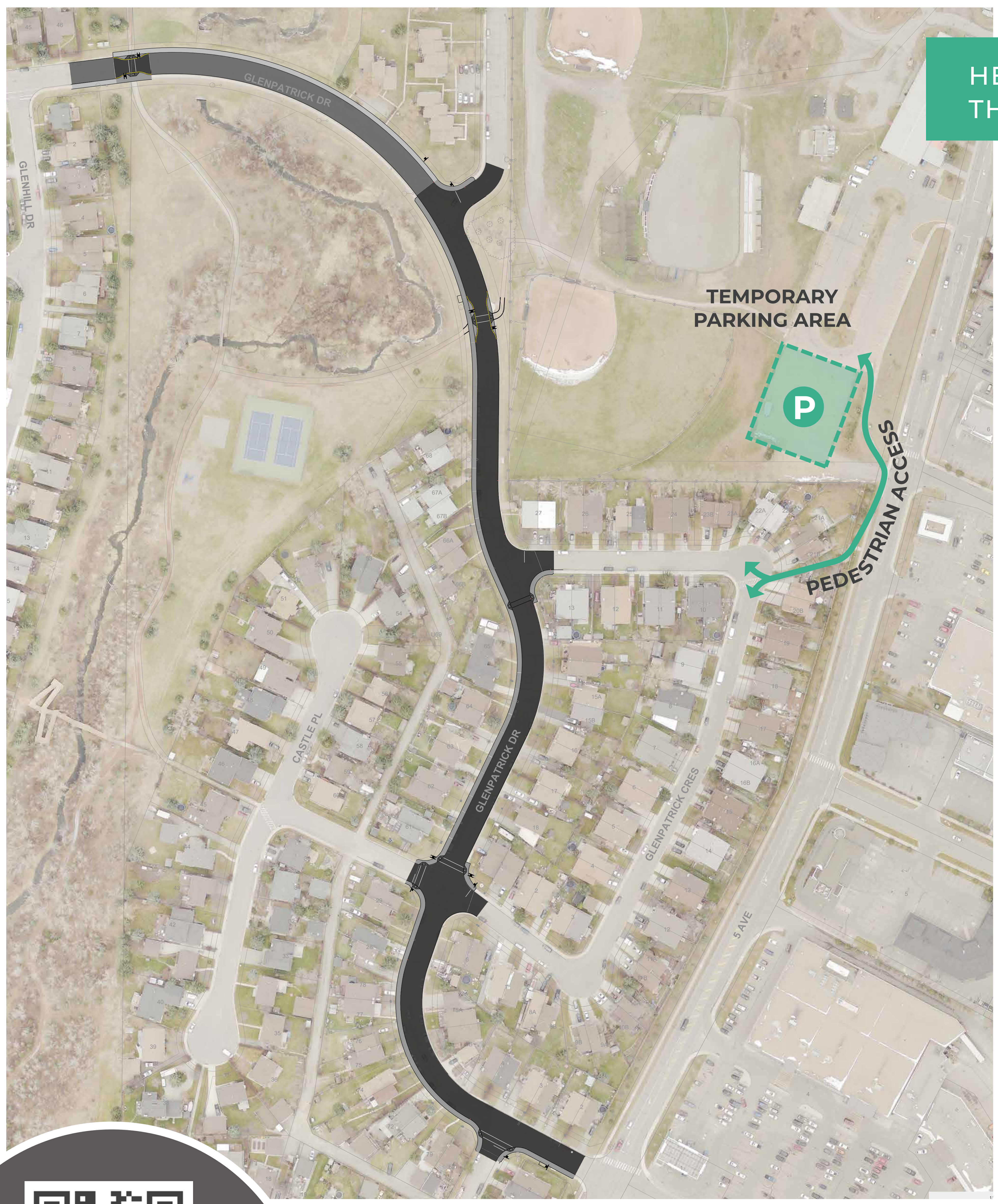
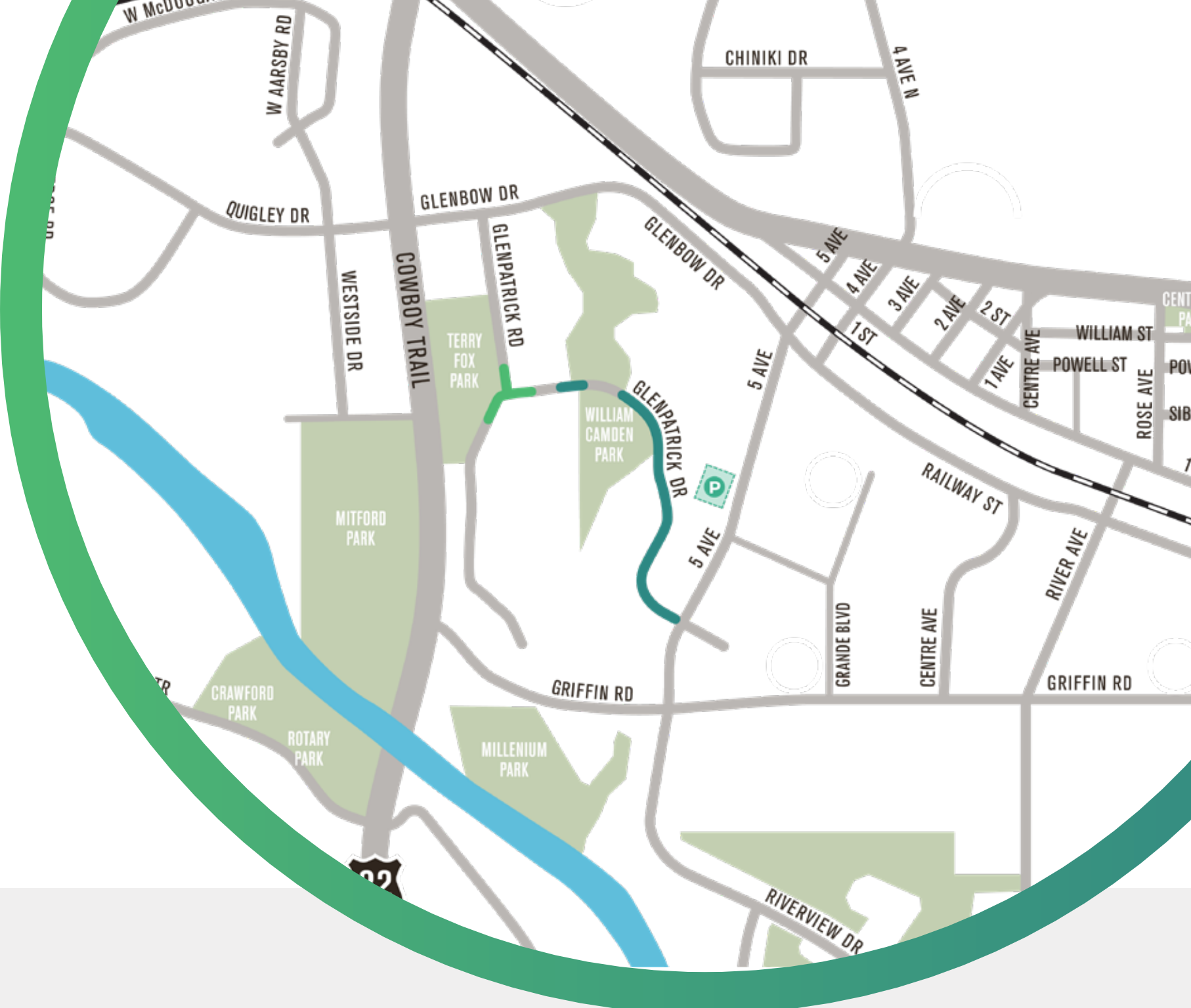
- Optional Sidewalk Replacement / Additions
- Optional Road Surface Replacements



Please use this QR Code to access additional information and stay up-to-date on these projects.



Temporary Parking



HELP AND SUPPORT THROUGH CONSTRUCTION

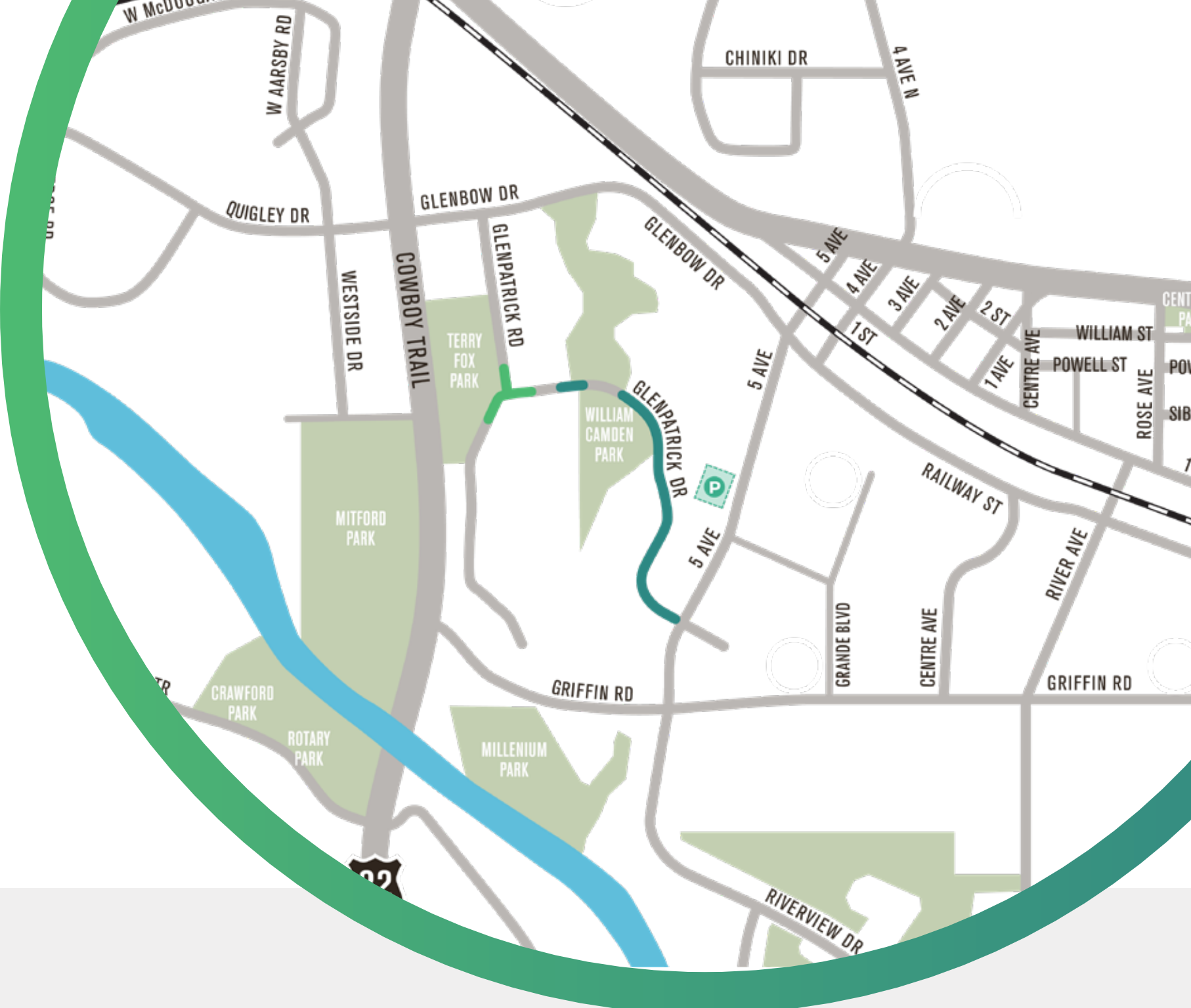
Road access will be limited during construction phases. Temporary Parking has been provided to residents on the identified adjacent land



Please use this QR Code to access additional information and stay up-to-date on these projects.



Resident Impacts



HELP AND SUPPORT THROUGH CONSTRUCTION

- Accessibility arrangements will be provided
- Waste Collection and Recycling in the active construction area will be handled by the Contractor
- Move in/ Move out support
- Moving Groceries through active construction zones
- Provide and maintain road access and egress to the properties fronting along or in vicinity of work



Please use this QR Code to access additional information and stay up-to-date on these projects.

