

# Provincial Highway 1A / 22 Interchange Enhancements

Expanding Highway 1A to 4 lanes from Big Hill Creek to Highway 22, and replacing the lights at Highway 1A and Highway 22.



## WHY IS THE PROVINCE DOING THIS?

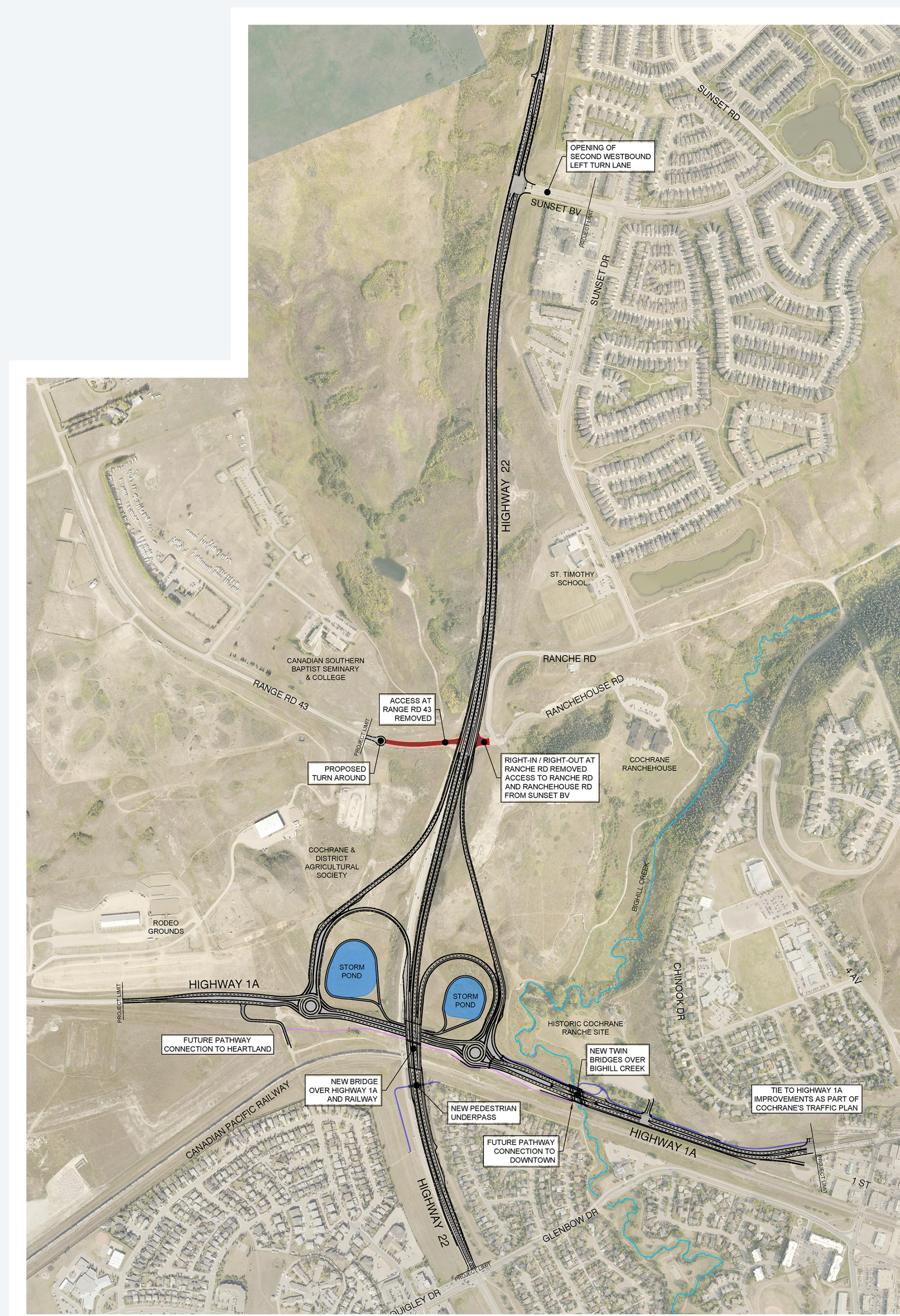
- Expand capacity of both highways
- Accommodate current and future growth
- Enhance safety
- Improve pedestrian access

## CONSTRUCTION SCOPE:

- Highway widening
- Two new bridges over Big Hill Creek
- New interchange ramps and roundabouts
- Replace Highway 22 CP Rail overpass
- Dual left turns at Highway 22 and Sunset Boulevard
- Ties to the limit of Cochrane Highway 1A Project at 6 Avenue
- Permanent access closure from Highway 22 to Range Road 43, Ranche Road and RancheHouse Road: **Complete** ✓

## RESIDENT IMPACTS:

- Traffic delays during construction
- Pedestrian detours during construction
- General construction noise and disruption



## CONSTRUCTION TIMELINES:

Interchange construction  
Spring 2023 → Fall 2025



Use this QR Code to access additional information and stay up-to-date on projects.

For Additional Information: <https://www.alberta.ca/cochrane-interchange.aspx>

Alberta

2024 CAPITAL PROJECTS OPEN HOUSE

cochrane  
HOW THE WEST IS NOW

