

A photograph of four people riding bicycles on a grassy path. The scene is outdoors, with a clear blue sky and green foliage in the background. The people are wearing casual clothing and helmets. The overall tone is bright and active.

# COCHRANE'S 2026 BUDGET

**DELIVERING THE SERVICES  
AND PROJECTS TO BUILD  
A COMPLETE COMMUNITY**



Each year, the Town creates a budget to fund the services, spaces and infrastructure residents rely on — and to plan responsibly for the year ahead.

Community input is an important part of the process. Through surveys, engagement opportunities, Council discussions and community conversations, residents help shape priorities and guide Town planning.

Inside, you'll find a snapshot of the 2026 budget — where funding comes from, how it's used and what's planned for the year ahead.



The Town's budget funds Cochrane services, infrastructure and long-term priorities. Staff develop the draft budget, Council reviews and provides feedback and adopts the budget. Spending is monitored and updates are shared publicly.



Follow along for simple, **one-minute snapshots** explaining how the budget works.

# BUDGET CYCLE

## SETTING PRIORITIES

Annually, we assess our community's needs and goals through input from residents, businesses and Town departments to prioritize projects and services.



## PROPERTY TAX

After we've identified priorities, determined the necessary funds, and assessed your property's value, your tax bill is calculated and delivered to you.

## BUILDING OUR BUDGET

Council reviews and debates the proposed budget.

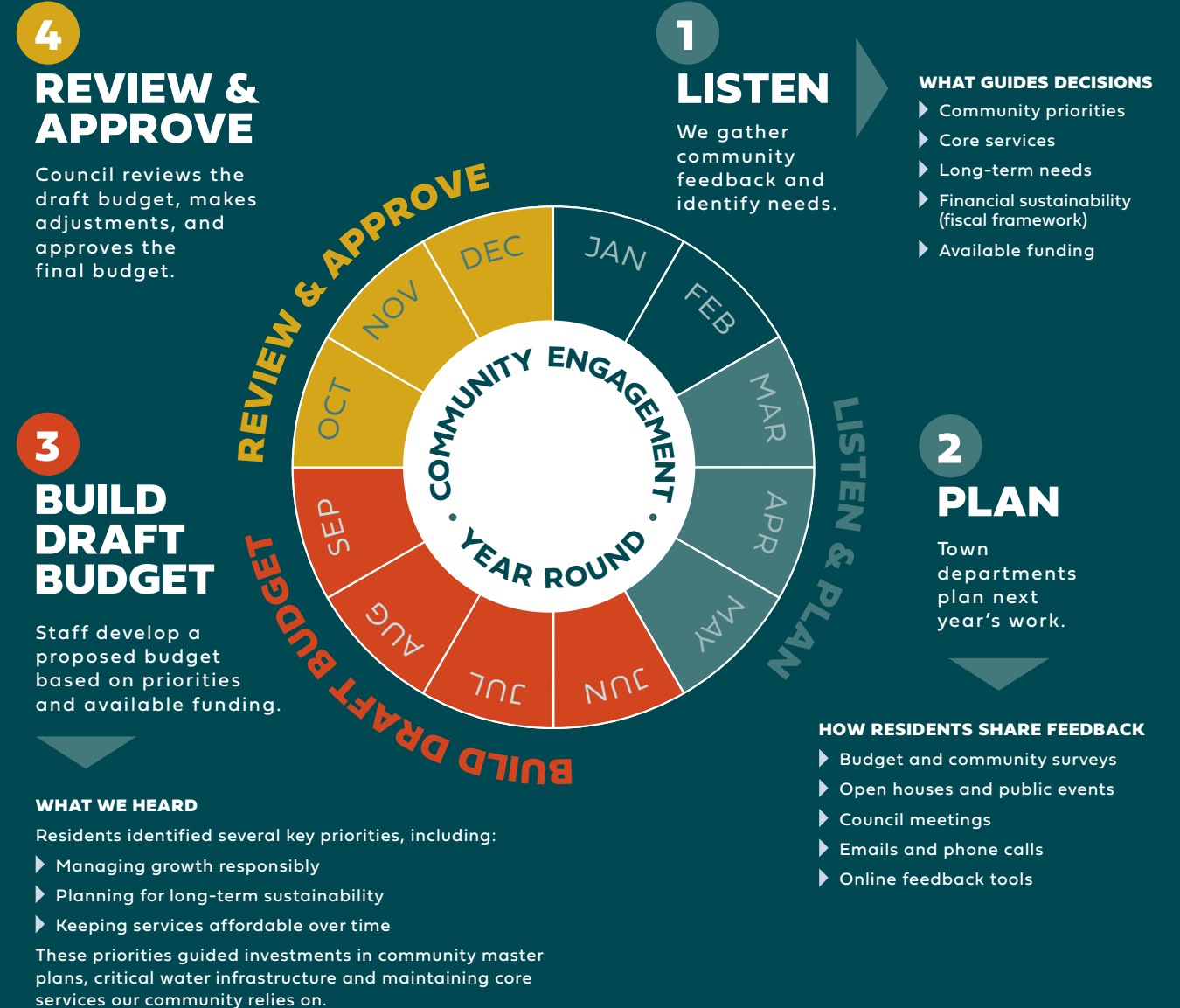
They make adjustments as needed to ensure it meets the community's needs while maintaining financial stability.

## PROPERTY ASSESSMENT

Funding for services, programs and civic partners comes from a combination of user fees and property taxes. The amount of property tax you are responsible for is partially determined by the assessed value of your property.

# BUDGET PROCESS

The budget is planned over many months.



## WHO MAKES BUDGET DECISIONS

COMMUNITY INPUT  
SETS PRIORITIES

TOWN STAFF  
BUILDS THE DRAFT BUDGET

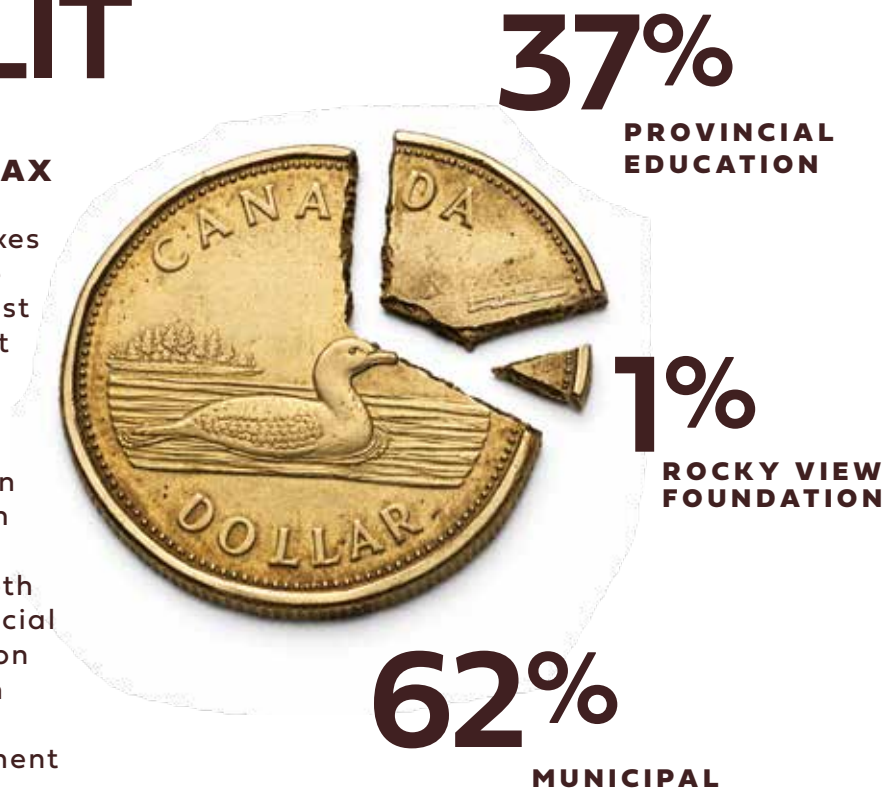
TOWN COUNCIL  
REVIEWS & APPROVES

# TAX SPLIT

## PROVINCIAL EDUCATION TAX

About 62% of your property taxes stay with the Town of Cochrane to pay for local services. The rest goes to the Province to support education and operation of seniors' housing.

The Province sets the education property tax rate, and the Town collects it on the Province's behalf. Your tax bill includes both municipal taxes and the provincial education tax and the education amount is shown separately on the notice. Council adopts the final tax rate after the assessment base has been finalized.



# SERVICE DELIVERY

The Town is made up of teams that work together to deliver services and support the community. Behind every service is a dedicated group of people — from firefighters and snowplow operators to parks staff and safety codes officers — who help keep Cochrane running.

## COMMUNITY SAFETY & WELLBEING



## INFRASTRUCTURE & DEVELOPMENT



## CORPORATE & ADMINISTRATIVE SERVICES



## UTILITIES



## OPERATING BUDGET

DAY-TO-DAY SERVICES/OPERATIONS:  
STAFFING, MAINTENANCE, PROGRAMS

## CAPITAL BUDGET

MAJOR PROJECTS/LONG-TERM INVESTMENTS:  
ROADS, PATHWAYS, FACILITIES, WATER SYSTEMS



# BUDGET INVESTMENTS



Cochrane's 2026 Budget funds projects you'll see and experience around town — like roads, pathways and parks. It also invests in safety, strong services and planning for the future.

## WATER & WASTEWATER



- ▶ Protecting and renewing critical water infrastructure
- ▶ Wastewater asset renewal and pipeline twinning

## ROADS & PATHWAYS



- ▶ Highway 1A / 22 Interchange – final paving & pathways\*
- ▶ Glenpatrick Drive infrastructure replacement\*
- ▶ Gleneagles Pathway upgrade
- ▶ Mitford Park Ball Diamond shale rehabilitation
- ▶ Big Hill Creek / Highway 1A pathway connection (planning)

## PARKS, RECREATION & COMMUNITY SPACES



- ▶ Samuel Spicer Playground upgrade (identified through the Playground Replacement Program)\*
- ▶ Horse Creek Sports Park – amenities planning and design
- ▶ Playground replacement program
- ▶ Wayfinding installation
- ▶ Jim Uffelmann Park riverbank rehabilitation

## COMMUNITY SAFETY



- ▶ New firefighter positions
- ▶ Two new peace officers and municipal enforcement summer students
- ▶ Fire flow improvements

## PLANNING FOR GROWTH & COMMUNITY LEADERSHIP



- ▶ New Council Strategic Plan
- ▶ Community master plans to guide growth
- ▶ Strengthened intergovernmental relations and advocacy
- ▶ New regulatory compliance position
- ▶ New grants position
- ▶ New capital projects positions

This is a snapshot of some of the projects you'll see in Cochrane in 2026.

Full details are available in the 2026 Budget at [cochrane.ca/budget](https://cochrane.ca/budget).

\*Projects started in 2025

# YOUR TAX DOLLARS AT WORK

Based on the municipal portion of property taxes for a average home assessed at \$680,700.

*This is an example only. Individual tax bills vary by property value.*



## PROPERTY TAX RECEIPT

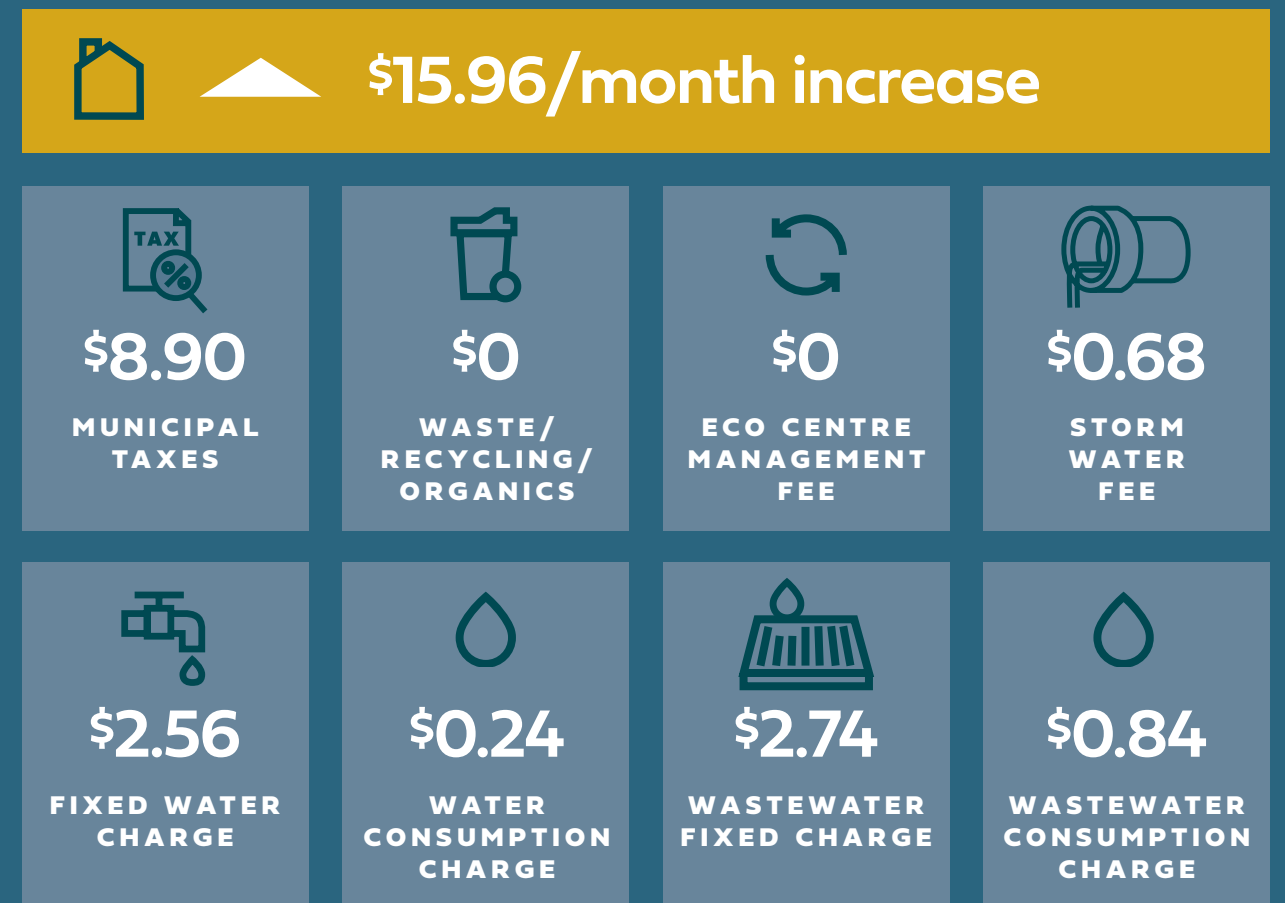
\*\*\*

.....	
<b>Mayor &amp; Council</b>	\$37.14
<b>Office of the CAO</b>	
CAO	\$18.06
Strategic Services (Asset Management, Corporate Communications, Corporate Strategy)	\$108.26
<b>Corporate Services</b>	
People & Culture (Human Resources, Health & Safety)	\$140.30
Legislative & Administrative Services, Information Technology	\$276.99
Financial & Assessment Services	\$125.60
<b>Development &amp; Infrastructure Services</b>	
Engineering Services (Capital Design & Civil Land, GIS)	\$57.82
Community Growth (Planning, Economic Development, Safety Codes)	\$47.32
Operations Services (Roads, Fleet, Facilities, Parks Maintenance, Cemetery)	\$583.22
<b>Community Safety &amp; Wellbeing</b>	
Parks & Active Living (Parks & Recreation, RancheHouse Event Services, Arts, Culture & Heritage, Community Partners)	\$398.62
Social Development (Family & Community Support Services, Family Resource Network, Community Support Programs, Strategic Housing Initiatives, Transit)	\$195.03
Community Safety (Fire Services, Municipal Enforcement, RCMP, Emergency Management)	\$741.63
<b>MUNICIPAL TOTAL</b>	<b>\$2,729.99</b>
<b>PROVINCIAL EDUCATION TOTAL</b>	<b>\$1,642.94</b>
<b>ROCKY VIEW FOUNDATION TOTAL (Seniors Housing)</b>	<b>\$43.91</b>
<b>Total:</b>	<b>\$ 4,416.84</b>
.....	

# WHAT THIS MEANS FOR THE AVERAGE HOME

For the average home, the 2026 budget results in an increase of about \$15.96 per month, or \$191 per year.

The graphic shows how each portion contributes to the essential services that keep Cochrane running—including municipal property taxes, water, wastewater and stormwater management.



Based on average residential assessment of \$680,700.

# HOW CAPITAL PROJECTS ARE FUNDED

Capital projects are paid for using a mix of funding sources, and they aren't usually funded through property taxes. Funding sources vary by project.

## FUNDING MAJOR SOURCES

- 

**GRANTS**
- 

**RESERVES  
(SAVINGS)**
- 

**DEVELOPER  
CONTRIBUTIONS**
- 

**UTILITY  
FUNDS**
- 

**DEBT  
(FOR LONG-TERM  
INFRASTRUCTURE)**



# PROJECTS AROUND TOWN



LEARN MORE AT [COCHRANE.CA/PROJECTS](https://cochrane.ca/projects)



## You can help shape the 2027 Budget.

**STAY IN THE LOOP, REGISTER**

[Letstalkcochrane.ca](https://letstalkcochrane.ca)

**SCAN ME**



Register to get notified when engagement opportunities open — and sign up to be considered for a future focus group.



## YOUR VOICE MATTERS

Community input helps guide decisions and long-term planning.

## WAYS TO STAY INVOLVED

- ▶ Take part in surveys
- ▶ Attend Council meetings
- ▶ Join open houses and engagement events
- ▶ Follow budget updates online



**LEARN  
MORE**



[cochrane.ca/budget](https://cochrane.ca/budget)

**cochrane**  
HOW THE WEST IS NOW

