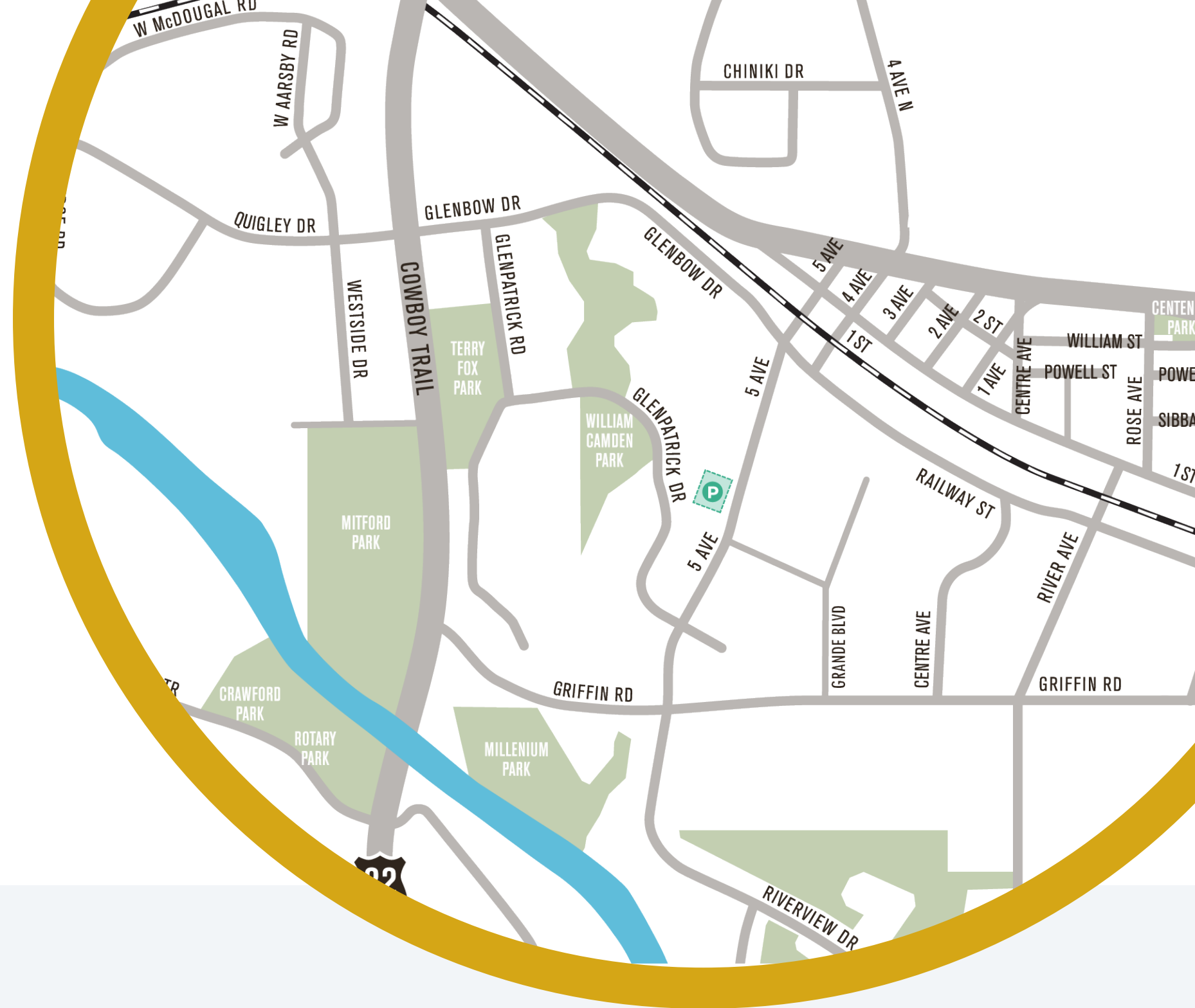


# Welcome, Glenbow Community!



## THANK YOU FOR JOINING US TODAY!

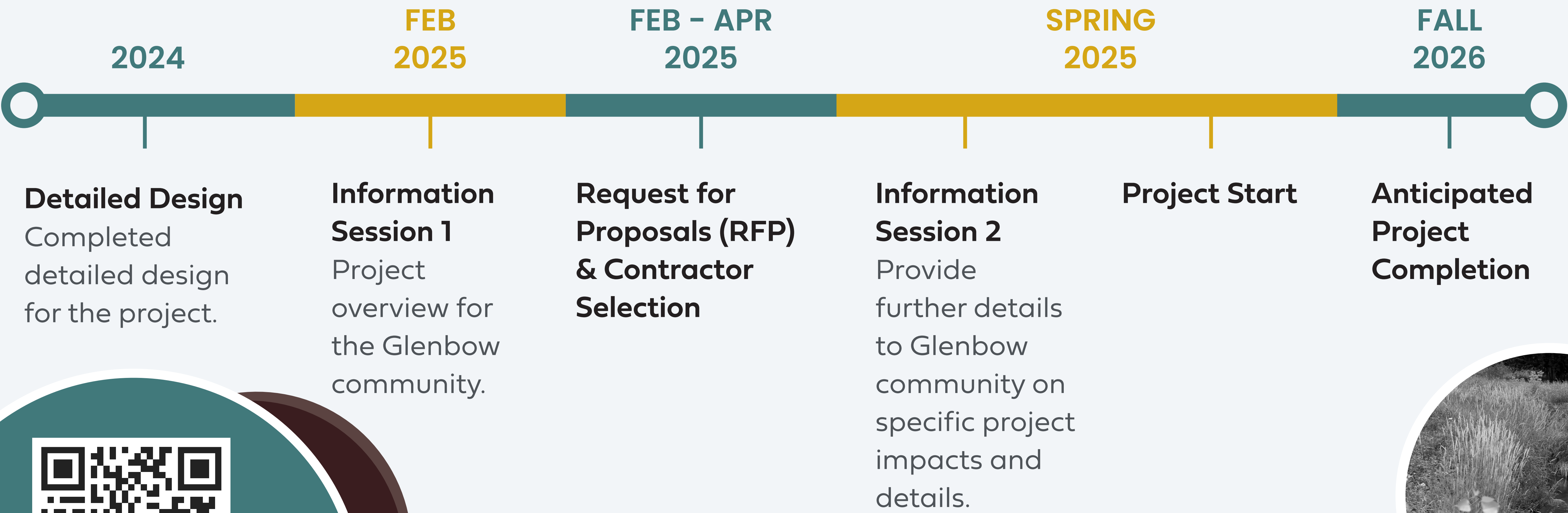
- We're excited to connect with you and share the details about the upcoming **Glenpatrick Drive Infrastructure Replacement Project**.
- This is a self-guided space with information boards for you to explore at your own pace.
  - Town staff are here to answer your questions, listen to your feedback and note any questions we don't have

Your input is invaluable, and we want you to feel welcomed, heard and informed.

Visit [cochrane.ca/glenpatrick](https://cochrane.ca/glenpatrick) for ongoing updates.



## TIMELINE





# Glenpatrick Drive Infrastructure Replacement

## WHY ARE WE DOING THIS?

**Replacing aging infrastructure:** The water, sewer, storm systems and roads in Glenbow are nearly 50 years old and need to be replaced to prevent failures and maintain reliable service.

**Upgrading Glenpatrick Drive:** Improvements will enhance safety and accessibility for drivers, pedestrians and cyclists.

## PROJECT SCOPE:

- Underground utility replacement
- Rebuilding the road to improve durability, safety and driving conditions.
- Sidewalk widening and replacement
- New sidewalk and multi-use pathway
- Enhance pedestrian crossings – concrete bump-outs

## TIMELINE:

Spring / Summer 2025 → Fall 2026

## RESIDENTIAL IMPACTS

- |                     |                                  |
|---------------------|----------------------------------|
| — Road detours      | — Driveway accessibility         |
| — Parking           | — Landscaping                    |
| — Sidewalk closures | — Mailbox relocation             |
|                     | — Waste collection and recycling |



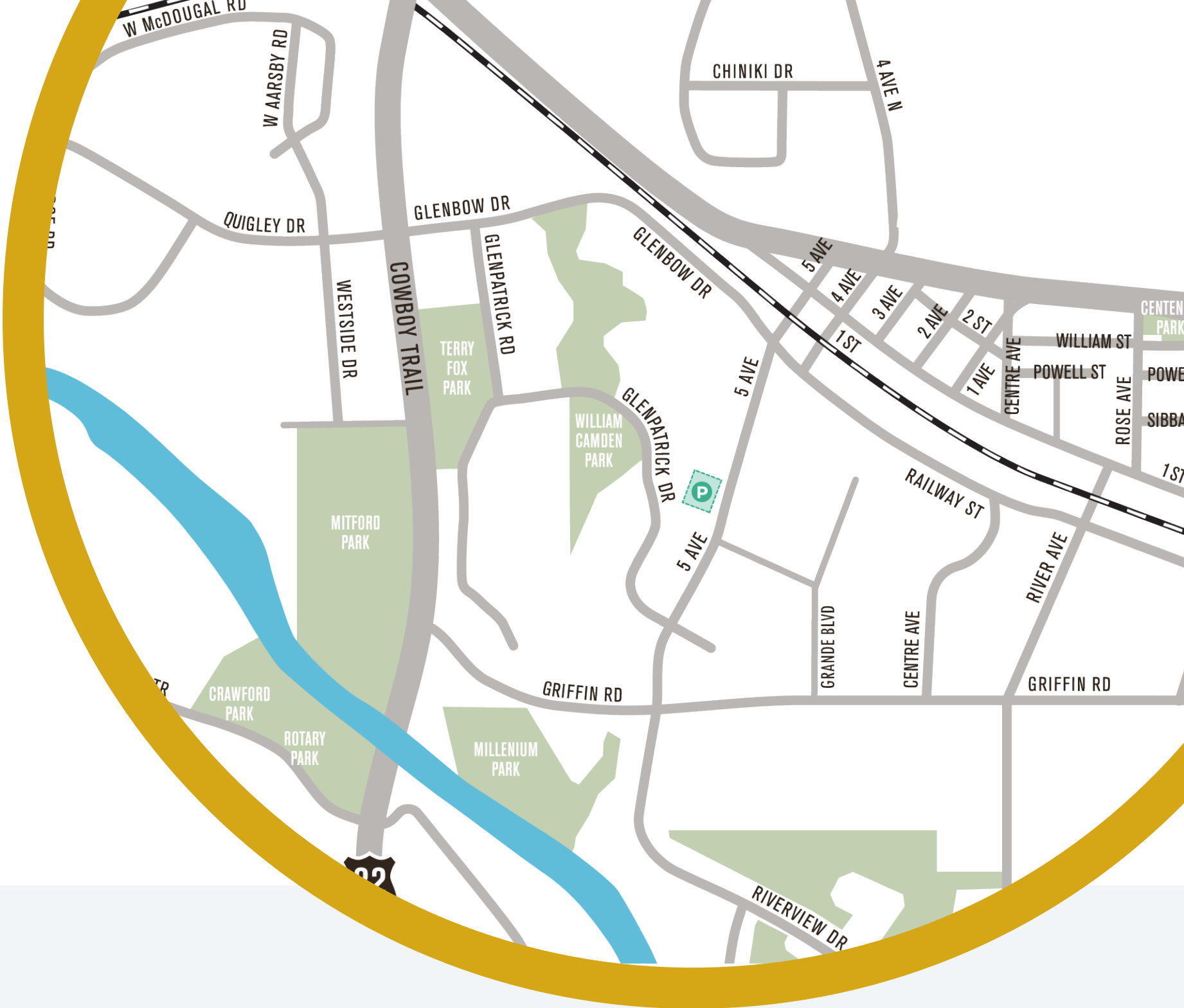
Please use this QR Code to access additional information and stay up-to-date on this project.

2025 INFRASTRUCTURE IMPROVEMENT PROJECTS





# Temporary Parking



## HELP AND SUPPORT THROUGH CONSTRUCTION

Road access may be limited at times during construction phases. Temporary Parking has been provided to residents on the identified adjacent land

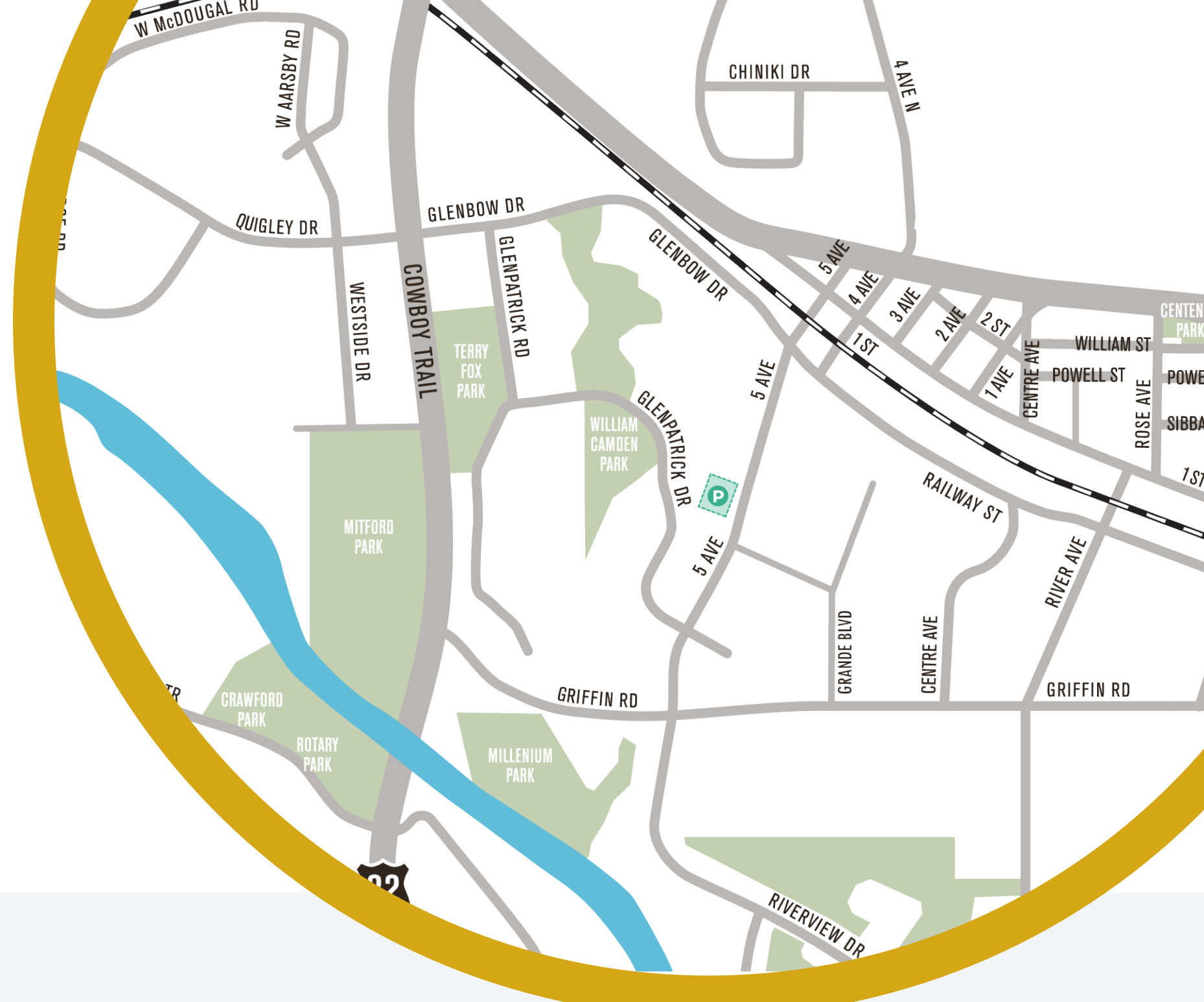


Please use this QR Code to access additional information and stay up-to-date on this project.





# Traffic Circle



## WHY ARE WE DOING THIS?

- Improve traffic movement
- Traffic calming
- Pedestrian crossing safety improvements

## SCOPE OF CONSTRUCTION:

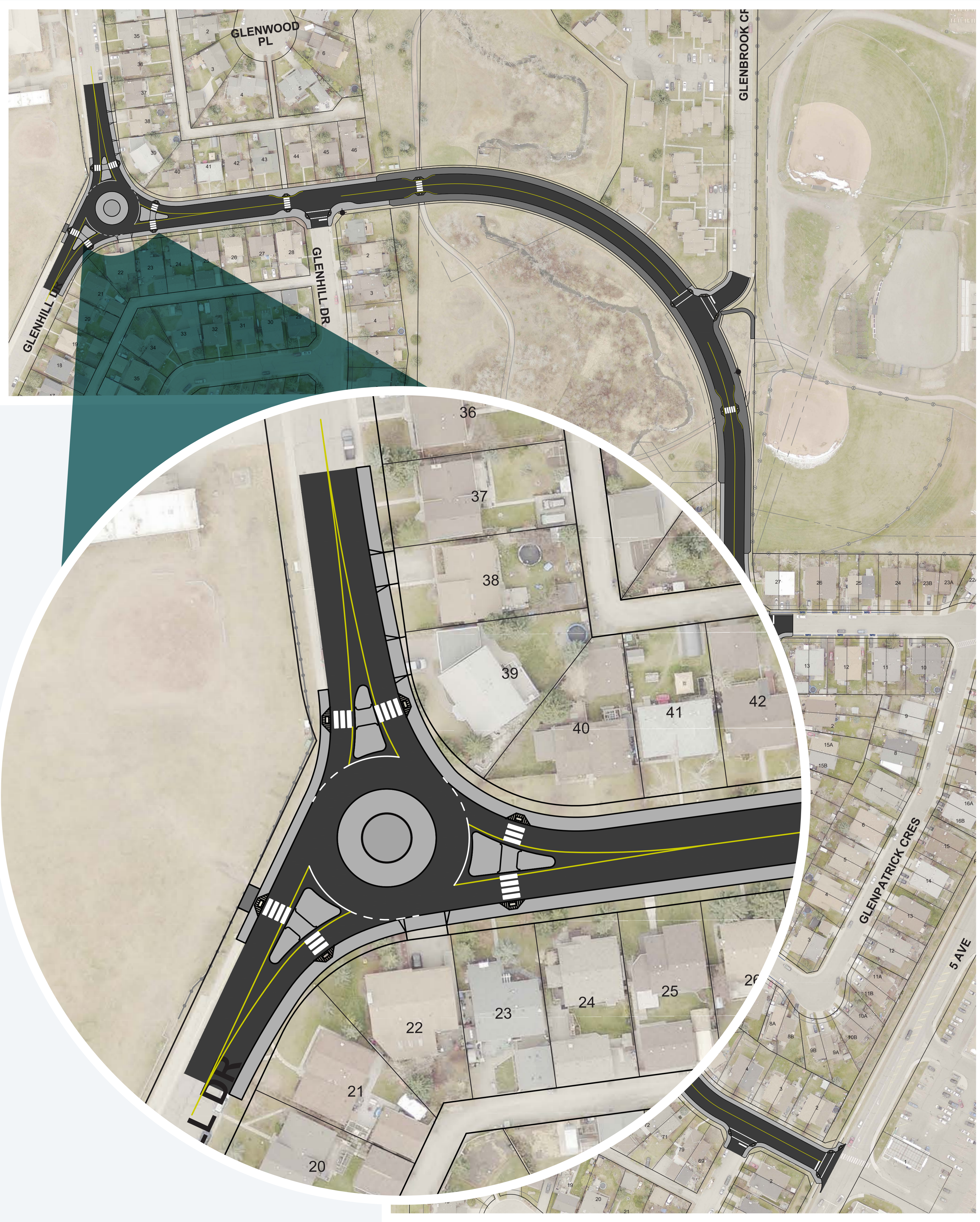
- Intersection improvement traffic circle
- Enhance pedestrian crossings
- Utility replacement

## TIMELINE:

Planning construction around the summer break

## RESIDENTIAL IMPACTS

- Road detours
- Parking
- Sidewalk closures
- Driveway accessibility
- Landscaping impacted by construction will be rehabilitated

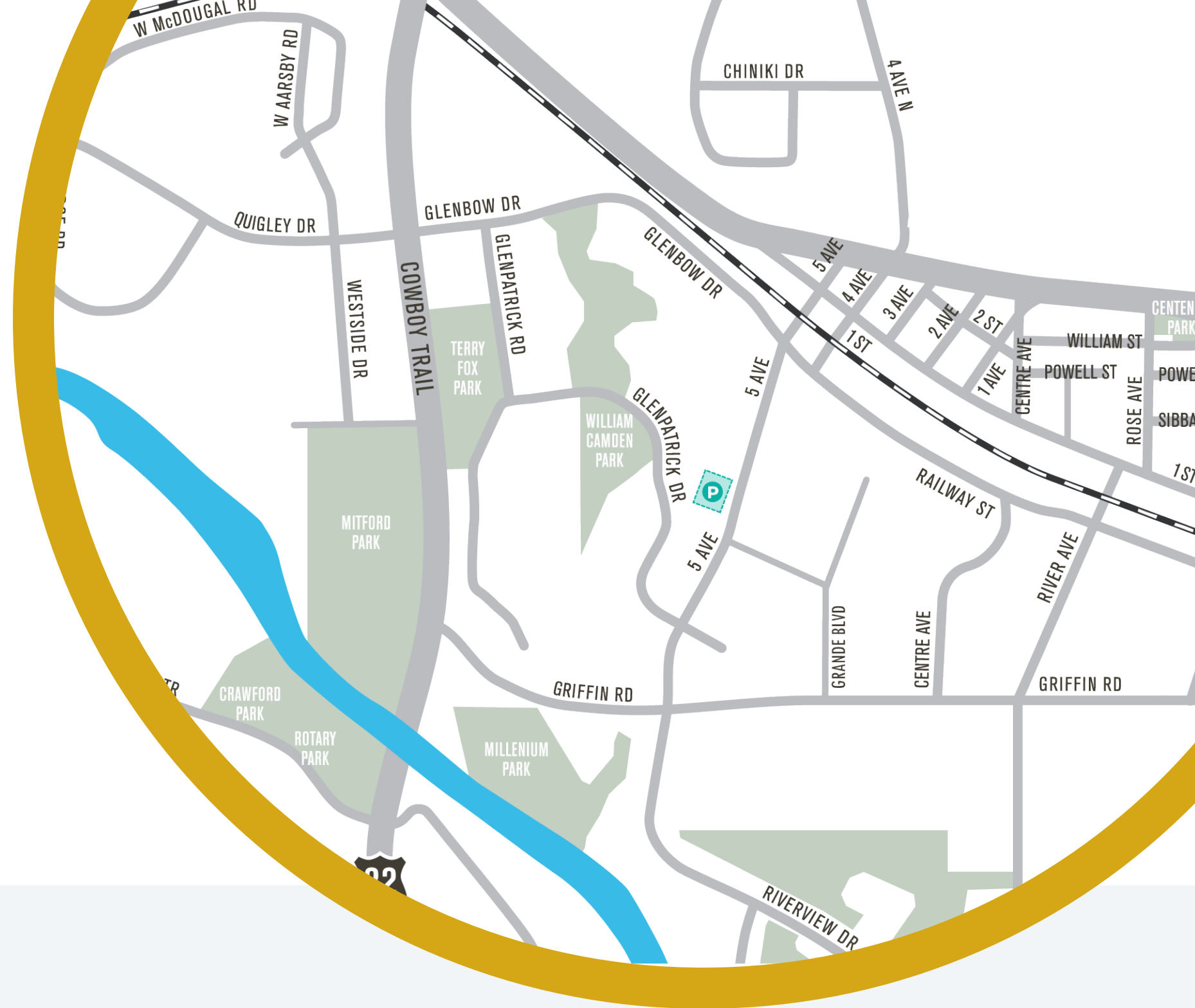


Please use this QR Code to access additional information and stay up-to-date on this project.



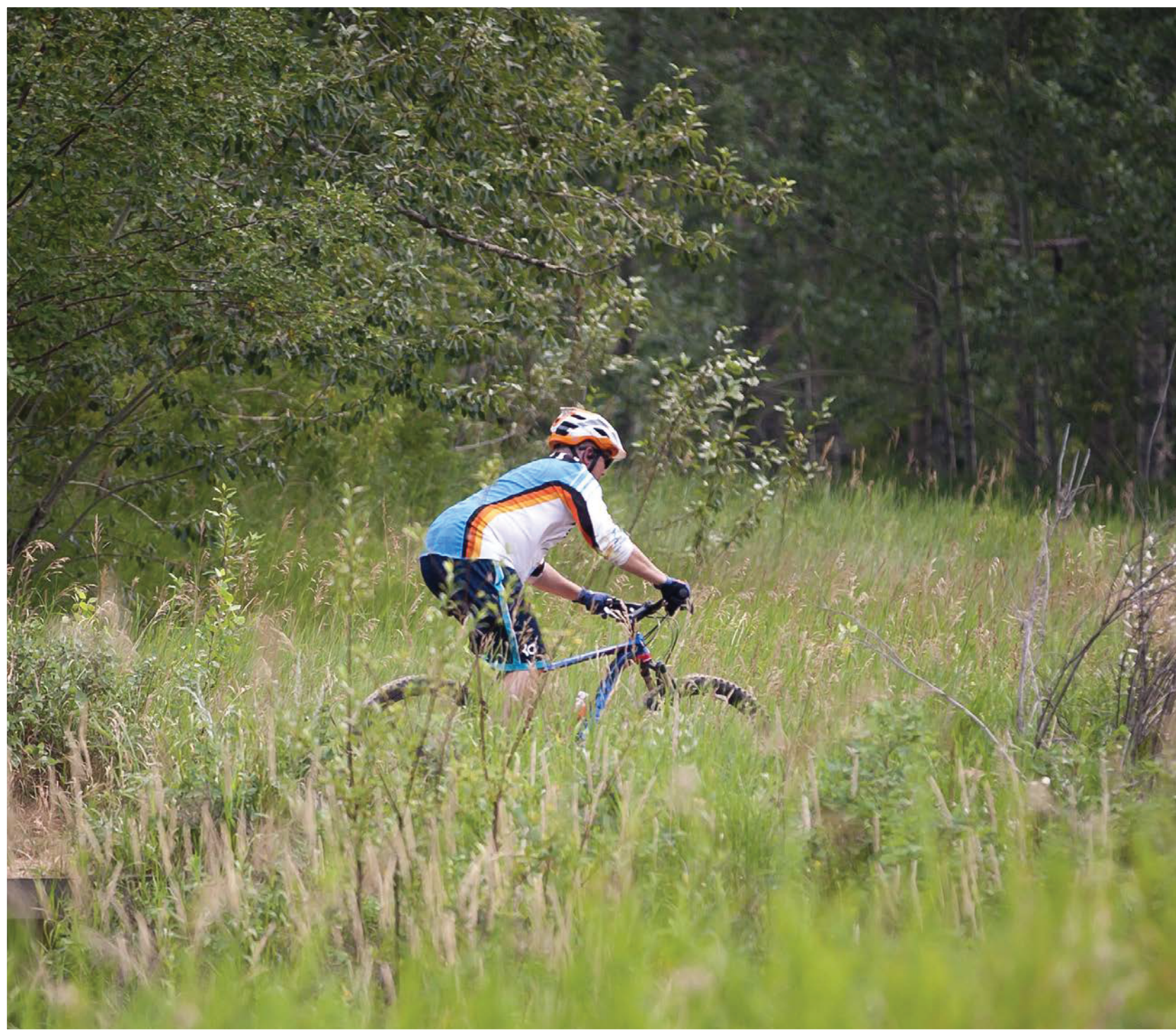


# Resident Impacts



## HELP AND SUPPORT THROUGH CONSTRUCTION

- Construction will be phased to reduce impacts, with details provided once a contractor is selected.
- Temporary detours will maintain property access during road and sidewalk closures.
- Alternative parking will be arranged during restrictions.
- Temporary water connections and waste/recycling accommodations may be required.



Please use this QR Code to access additional information and stay up-to-date on this project.



# Learn More

## STAY CONNECTED AND INFORMED

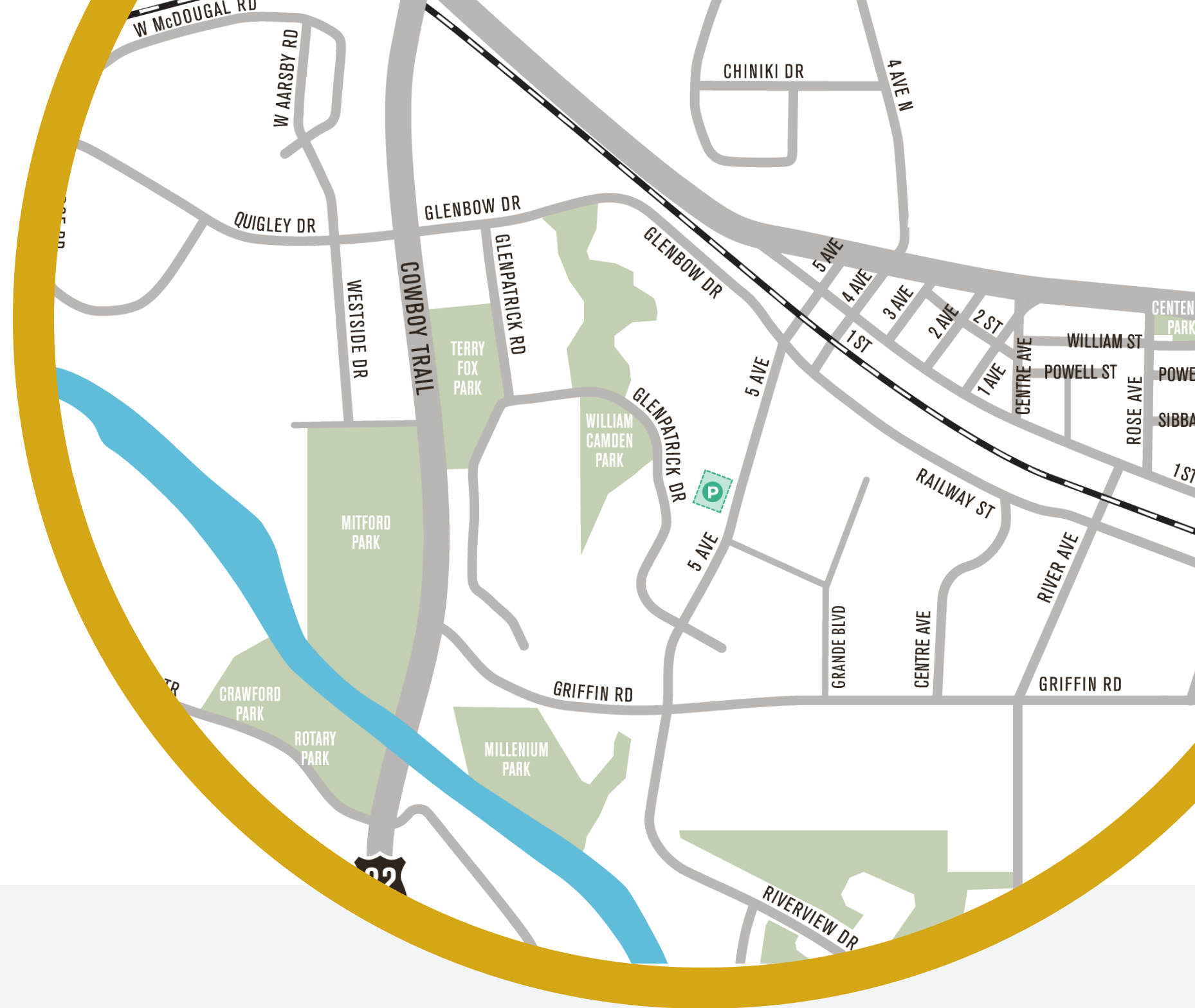
We are committed to keeping you in the loop every step of the way with the Glenpatrick Drive Infrastructure Replacement Project.

For updates, please visit [cochrane.ca/glenpatrick](https://cochrane.ca/glenpatrick) and sign up to stay informed.

We'll be hosting another information session this spring, where we'll share more specific details with you about the project.

We value your voice and look forward to collaborating with you as we move forward.

Should you have any further questions, please contact us via email at [glenpatrick@cochrane.ca](mailto:glenpatrick@cochrane.ca) or call us at 403-851-2500.

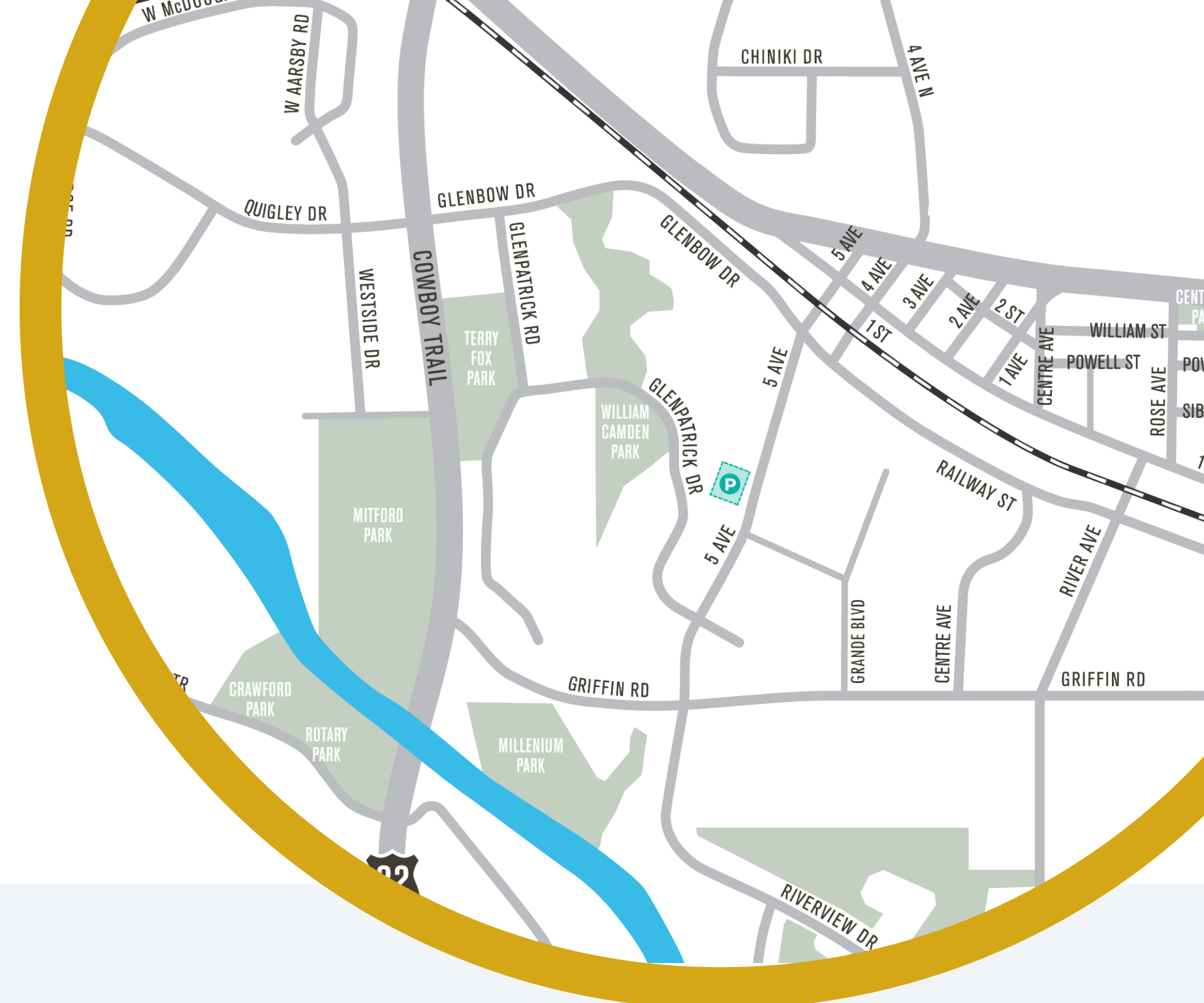


Please use this QR Code to access additional information and stay up-to-date on this project.





# Frequently Asked Questions



## What can I expect during construction?

- To minimize the impacts to the residents, the construction will be carried out in phases. Further details about the project phasing will be provided once a contractor is selected to complete the work.
- Road and sidewalk closures will be required, and temporary detours will be provided to maintain property access.
- Parking restrictions will be required, and temporary parking locations will be identified and provided during construction.
- Temporary water connections and waste/recycling accommodations may be required.

## When will construction start and finish?

Construction is expected to begin in the spring of 2025 with completion of the project expected in the fall of 2026. A more detailed schedule will be shared once a contractor is selected for the project.

## How will the contractor and subcontractors be selected for this project, and what qualifications will they be required to have?

The contractor for this project will be selected through a competitive procurement process, ensuring that the chosen team meets all necessary qualifications and experience. Contractors and subcontractors will be required to have the appropriate certifications, licenses and relevant experience to carry out the work to the highest standards. Once the contractor is selected, more detailed information will be provided.

## What happens if there are delays during the project?

When you open a road, unexpected surprises can arise, and Cochrane’s weather can add to the challenges. While we can’t control everything, the Town has plans in place to manage unforeseen circumstances. If the construction schedule changes, we’ll keep you updated on the project page.

## Will there be any disruptions to my water service?

We’re focused on maintaining service throughout the project. If needed, we’ll set up temporary connections to keep everything running smoothly.

## Why are you adding sidewalks?

Sidewalks are being added to enhance public safety, particularly for pedestrians and children walking to Glenbow Elementary School. The new sidewalks will provide a safe, designated space for walking, keeping pedestrians separated from traffic and provide safe access to community mailboxes. This improvement will also increase accessibility for all, including children, parents and individuals with mobility challenges.

## What will be the working hours during construction?

Working hours will follow the Town of Cochrane Noise Bylaw. Typically, work hours are from 7 a.m. to 6 p.m., Monday to Saturday, and from 9 a.m. to 6 p.m. on Sundays and holidays. If work outside the typical bylaw hours is required, we will provide you with advance notice.

## How will emergency access be maintained during construction?

Safety is our top priority. Cochrane Protective Services will be actively engaged throughout the project to ensure emergency access is maintained at all times.

## Will my waste and recycling services be affected?

Collection will continue throughout the project. If temporary adjustments are needed, we will coordinate them and keep you updated.



Please use this QR Code to access additional information and stay up-to-date on this project.